

Lot 353 Everleigh Crescent, Harris Crossing, Bohle Plains, Qld 4817



House For Sale

Sunday, 5 May 2024

Lot 353 Everleigh Crescent, Harris Crossing, Bohle Plains, Qld 4817

Bedrooms: 3

Bathrooms: 2

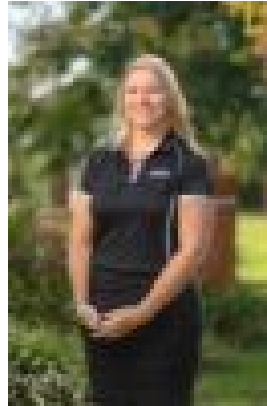
Parkings: 2

Area: 211 m2

Type: House



Ian Maloney
1300455557



Sarah Wheatley
1300455557

\$789,850 With First Home Owners Grant

The Sunnyland Home Features: High cathedral ceilings with rustic beams to Living and Dining continuing out onto the timber deck with a large fixed glass panel above the large sliding glass door. • 2600mm high ceilings to rest of home. • Hamptons-inspired kitchen with soft close cabinetry and walk-in • pantry. • Internal laundry with large walk-in • linen and mud room. • 2 secondary bedrooms located in private wing with private bathroom. • Second living space complete with designer open timber slating. • Fujitsu Air conditioning and fans in every room • 3 Step cornices in living spaces • Designer grade tap wear • LED down-lights to living, dining, & bedrooms. • Diamond security screens to all windows and doors. • Full Turnkey including landscaping To be built by Master Builders award winners Ellis Developments, this home presents the best opportunity to get into Townsville's property market whether you are a first time buyer or seasoned investor. Offering the highest level of standard inclusions in the local market, Ellis Developments prides itself on an unwavering commitment to customer service while also delivering the most up-to-date finishings on a truly masterful design. Our standard inclusions are: • 2.7m ceilings • 40mm stone breakfast bar benchtops • Two types of termite protection • Air conditioning in every room • Security screens • Roller blinds • Blanco kitchen appliances • 3 step cornices in the living areas • Custom cabinets with soft close doors Contact me Today to start building this dream luxury home!