

# Lot 358 Everleigh Crescent, Harris Crossing, Bohle Plains, Qld 4817



## House For Sale

Sunday, 5 May 2024

Lot 358 Everleigh Crescent, Harris Crossing, Bohle Plains, Qld 4817

**Bedrooms: 5**

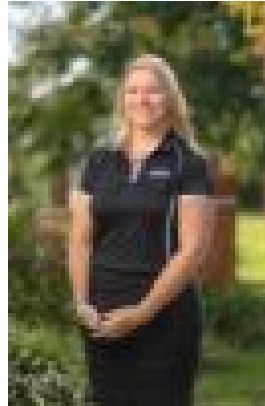
**Bathrooms: 2**

**Parkings: 2**

**Type: House**



Ian Maloney  
0423960127



Sarah Wheatley  
0411690859

## **\$788,600 With First Home Buyers Grant**

Harris Crossing is a prestige estate so close to many schools and shops and located on the banks of the Bohle River. Unveil the grandeur of the Wilmington Design – a sprawling 5-bedroom masterpiece tailored for the growing family. This expansive residence offers the perfect canvas for creating lasting memories. Escape to opulence in the strategically placed master suite, designed as a private retreat away from secondary bedrooms. Revel in the generous proportions of a lavish ensuite and a walk-in robe, providing a haven that balances luxury with functionality. Discover a home that understands the unique needs of a growing family. With the Wilmington Design, every room is a statement, and every detail is crafted to enhance your living experience. Elevate your lifestyle and make this spacious sanctuary your home. Eden Park blocks are selling quickly with not many blocks remaining in this estate. This block is in the last stage of this Estate. To be built by HIA and Master Builders award winners Ellis Developments, this home presents the best opportunity to get into Townsville's property market whether you are a first time buyer or seasoned investor. Our Wilmington design caters to small and large families looking for luxury living at affordable prices! Offering the highest level of standard inclusions in the local market, Ellis Developments prides itself on an unwavering commitment to customer service while also delivering the most up-to-date finishings on a truly masterful design. Our standard inclusions are:

- Large lot living featuring wide frontage and large front porch for ultimate street appeal.
- Versatile 4 bedroom design
- Large and private master suite is situated away from secondary bedrooms- equipped with large ensuite and walk-in-robe.
- Open plan living design with private rear patio situated to make the most of your large lot.
- 2.7m ceilings
- Stone benchtops throughout
- Two types of termite protection
- Split-System Air conditioning and fans in every room
- 3 Step cornices in living spaces
- Custom cabinetry throughout with soft close kitchen cabinets and drawers.
- Designer grade tap wear throughout. Stainless steel appliances.
- Tiles to all living, carpet to bedrooms.
- LED down-lights to living, dining, & bedrooms. Diamond security screens to all windows and doors.
- Front garden beds to meet covenant, driveway, clothesline, blinds, and letterbox.

Visit our Savannah 'B' display home at 15 Firewheel Parade, Sanctum - open 9am until 5pm Fridays through to Tuesdays. Images are for illustrative purposes only.