

Lot 367 Marker Road, Yanchep, WA 6035

House For Sale

Monday, 17 June 2024



Lot 367 Marker Road, Yanchep, WA 6035

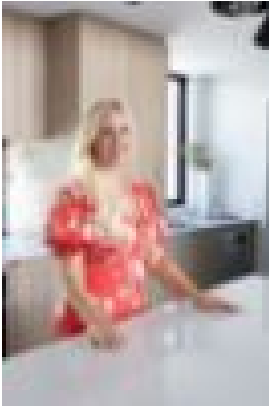
Bedrooms: 3

Bathrooms: 2

Parkings: 2

Area: 313 m2

Type: House



Hayley Camilleri

0415156650

Awaiting Price Guide

Enjoy the peace of mind of a Brand New Home, Designed with Modern Living in mind and with the ultimate in eco-friendly features – This stunning B1 Home will see you livin' life to the max, whilst minimising your utility bills! Positioned perfectly within the Golf Estate, You will enjoy a fantastic lifestyle, being close to Schools, lush green parks, amazing shopping and close to the Freeway and Public Transport for easy access to work and beyond. What you need to know about the build....Stunning B1 Homes Redondo design:- 3 bed including master with WIR & ensuite- 2 bath- 2 car garage- Open plan kitchen, living and dining- Large WIP- Alfresco Welcome to the Redondo – a beautifully designed home that perfectly balances functionality and style. With 3 bedrooms, 2 bathrooms, and a double car garage, this home is ideal for families or couples looking for a spacious yet practical living space. The Redondo is perfectly suited for blocks with a minimum 12.5m frontage, providing ample space for indoor and outdoor living. The heart of the Redondo is its open living, dining, and kitchen area. The island bench and walk-in pantry are perfect for those who love to cook and entertain. The master bedroom, located at the back of the home, is a true oasis with its large walk-in robe and ensuite bathroom. The two additional bedrooms are spacious and located on the other side of the home, ensuring maximum privacy for all occupants. The Redondo's modern design is completed with a separate laundry room that connects to the walk-in pantry and a double-car garage. This home is perfect for those who value functionality and style in equal measure. Industry leading complete specification including:- Full circle promotion with 12 month price hold period, 12 month build guarantee & 12 month maintenance period!- Double clay brick construction- 28 course ceilings throughout- Choice of 3 x Designer Elevations with two tone acrylic render- Premium eco-logical front yard landscaping package, side & rear fencing, and a connection to Trinity's fibre optic network- Soft close drawers & cupboards- BCA compliant- HIA fixed price contract- Full working drawings- Full indemnity insurance- Lifetime structural guarantee! What you need to know about your builder, B1 Homes...YOU'RE IN GOOD HANDS! We're part of the Scott Park Group – which means you can have peace of mind. The Scott Park Group continues to strive in its pursuit of delivering outstanding service through its various building brands and across its core businesses. As one of the fastest growing building groups nationally we continue to train, innovate and deliver great outcomes to the most important people we know....our customers. This single minded focus is the driving force and continues to direct our efforts now and into the future. What you need to know about the location....Welcome to a residential estate uniquely integrated with a golf course and nestled amongst serenity and useful amenity. Yanchep Golf Estate is evolving within a breathtaking environment of rolling fairway greens, leafy cultivated parks and open spaces, and neighbouring natural bushland. Clever estate infrastructure planning and community design, along with well-established surrounding amenities, elevate Yanchep Golf Estate above all others. This is an enriched masterplanned estate of the highest quality that already offers so much today, and even more exciting possibilities tomorrow. Yanchep Golf Estate is ready and waiting for every kind of lifestyle, for every age and stage of family life. Whether its spending endless hours next door on the rolling fairways of Sun City Country Club and Golf Course, family get togethers surrounded by the gem that is Yanchep National Park, or simply getting outdoors everyday in your community in the landscaped parks, open spaces and playgrounds. Freeway access now open! The highly anticipated Mitchell Freeway Extension via Romeo Road north of Perth is now officially open. The freeway now extends north from Hester Avenue in Clarkson through to Romeo Road in Alkimos, which is just 9.5km from your brand-new home in Yanchep Golf Estate. What you need to know about the numbers....Investor? Expected weekly rental return of \$650+ per week, with a yield of 6.06%+ per annum! Owner occupier? First home buyer? Complete Home Loan Calculator below to work out approximate repayment. Need help with finance or a 2nd opinion? We have in house finance options available, and can help with most scenarios. If high debt levels, bad credit score or unusual income sources have been holding you back in the past, don't let it hold you back any longer! With a rapidly growing market, rising rental costs and a return to very reasonable building time frames, this really is a fantastic time to build an investment property, your next home....Or your first! Hit "Get in touch" + "Send enquiry" buttons and we'll be right with you! Please include a Mobile Phone Number so we can SMS you everything you need. Don't miss out....this incredible opportunity won't last long!

Note: Pricing Advertised includes \$10,000 First Home Owners Grant & any land rebates associated with the lot. Sources: realestate.com, SQM Research, Australian Bureau of Statistics, REIWA. Disclaimer: Photographs on this page may depict fixtures, finishes and features not supplied by B1 Homes and not included in any pricing specified. They may not be representative of the Plan or Elevation included within the advertised price. B1 Homes BRN 14299 Full Terms and Conditions of this listing available at www.b1homes.com.au/terms-conditions/