

Lot 370 Dimple Road, Yanchep, WA 6035

House For Sale

Sunday, 26 May 2024



Lot 370 Dimple Road, Yanchep, WA 6035

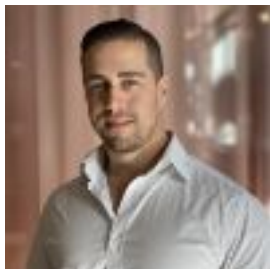
Bedrooms: 4

Bathrooms: 2

Parkings: 2

Area: 377 m2

Type: House



Richard Wetterhahn

0455220032

From \$592,880

Yanchep Golf Estate is the place for you if you love beaches, beautiful parks with shady trees, and fully established amenities. With plenty of open spaces for the whole family to enjoy and regular community events, you'll love being a part of the Yanchep community. All families need a bit of space. The Sardinia is perfect for parents who love to entertain and spent quality time with their family, but also enjoy their piece when needed. You'll find all you need and more in this well-designed home design with 4 bedrooms and plenty of storage! Our Quality Inclusions- Fully equipped gourmet custom kitchen with Caesarstone® benchtops and stainless-steel appliances- Hobless showers with semi-frameless shower screens as standard- Soft close cupboards and drawers as standard - Smart Home Technology Pack included- Jason Windows sliding doors and windows- COLORBOND® steel roof, fascia, downpipes and gutters- Fly screens to all opening windows and sliding doors- Industry-leading build times with in-house trades and fixed siteworks costs- 12 month service warranty and 25 year structural guarantee!+ heaps more!Don't compromise on space, quality or ease. Enjoy peace of mind that with Homebuyers Centre, we guarantee a certain industry standard in everything we do. For more information or for a no-obligation chat, get in touch

today.*****DISCLAIMER; *Full retail Price \$602,880. Advertised adjusted price includes a \$10,000 builders adjustment. Terms & conditions apply. © The Copyright of this design is the sole property of Homebuyers Centre and there is no implied licence for its use for any purpose. Homebuyers Centre is not the owner of the land. Homebuyers Centre has permission from the owner of the land to advertise the land for the price specified. The land price does not include transfer duty, settlement costs and any other fees or disbursements associated with the settlement of the land. Block and building dimensions may vary from the illustration. Prices specified may vary and be subject to change once all site works plans are completed and the current market value of the land and other relevant costs are taken into consideration and Homebuyers Centre and the owner of the land reserve the right to alter the home, land and site work prices. The information and pricing is correct at time of publication. The elevation and imagery are for illustrative purposes only and the elevation is not included in the price of the building (unless specified). This illustrations will depict features not included as standard features for this building or not supplied by Homebuyers Centre including but not limited to elevation features, landscaping features such as planter boxes, turf, letterbox, outdoor areas, retaining walls, water features, pergolas, screens, gates, fences, paving, decking, feature lighting, BBQ's and outdoor kitchens. ABN Residential WA Pty Ltd, trading as Homebuyers Centre. BC 5409.