

# Lot 395, Longton Street, Bohle Plains, Qld 4817



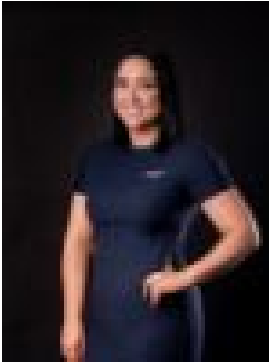
## Sold Residential Land

Wednesday, 18 October 2023

Lot 395, Longton Street, Bohle Plains, Qld 4817

Area: 802 m2

Type: Residential Land



Alex Bourne Harris Crossing  
0455428932

**\$289,000**

SAVE \$10,000 OFF THIS BLOCK!! (t&cs apply)- 802m<sup>2</sup> corner home site- Dream location with easy access to walking paths and parkland- Big block, big ideas... room for the shed and poolTo kickstart your new home journey at Harris Crossing, please call Alex on 0455 428 932 or visit the Sales Centre at 6 Broadmeadows Crescent, Bohle Plains. Open seven days 10am to 5pm.--A community that is only minutes away from Townsville's city centre, Harris Crossing gives you a new lifestyle choice. Surrounded by lush parkland and bordered by the Bohle River, Harris Crossing is located close to all the day-to-day services you need.- 3 Minutes to Willows Shopping Centre, Reading Cinemas and the Cannon Park Entertainment Precinct.- 4 Minutes from the Riverway Lagoons and Arts Centre.- 4-6 Minutes from quality childcare, primary and high schools.- Walking distance to fresh water fishing holes along the banks of the Bohle River.Be part of a dynamic community that is fast-growing, affordable and ideally located to suit your lifestyle needs. It's your chance to build a brand new home in a progressive and modern community, that's all about convenience and the flexibility to live life the way you want.- Located in the heart of Thuringowa Central, just 12km from the Townsville CBD. - When complete 800 families will call Harris Crossing home, on blocks ranging from 375sqm-1280sqm.- Enjoy more than 70 hectares of proposed parkland and green space which will include playgrounds, boardwalks, picnic areas, walking trails and natural riverbank access to the banks of the Bohle River.- With the Ring Road close by, you're well connected to Lavarack Barracks, Townsville Hospital and JCU, all within a few minutes' drive.