

# Lot 4, 25-29 Leah Avenue, Salisbury, Qld 4107

## Residential Land For Sale

Tuesday, 30 April 2024



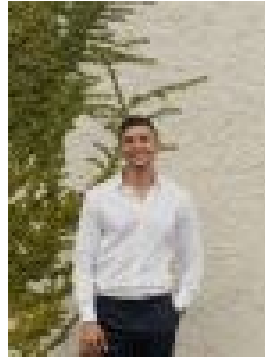
Lot 4, 25-29 Leah Avenue, Salisbury, Qld 4107

Area: 713 m2

Type: Residential Land



Miran Ranchod  
0457979966



Morgan Lewis

## Now Selling

Nestled in a serene cul-de-sac on Leah Avenue, Salisbury, Haven Estate presents a golden opportunity for those seeking to build their dream home in a thriving community. Estate Highlights: » Lot 4, 713sqm » All civil works complete » Large, flat compacted building envelope suitable for wide range of house plans » New fencing on 3 boundaries » Title registration soon

This family-friendly suburb is buzzing with development, ensuring a promising future for residents. Enjoy the convenience of well-connected living, with easy access to Salisbury Train Station and efficient bus services. You'll also find QE2 Hospital, Griffith University Nathan Campus, top-notch schools, childcare centers, parks, and shopping hubs within arm's reach. Just 10 kilometers from Brisbane's vibrant CBD, Haven Estate boasts a prime location for urban convenience. With Westfield Garden City, Sunnybank Plaza, and Market Square just a short drive away, your retail and dining desires are well-catered to. Salisbury's strategic location and freeway access make it the perfect blend of urban convenience and suburban tranquility.

Location Highlights: » 750m (2min) Salisbury State School » 1.1km (3min) Brisbane Christian College Primary Campus » 1.3km (4min) ALDI » 1.8km (4min) Salisbury Recreation Reserve » 2km (4min) C&K Salisbury Community Childcare Centre » 2.1km (4min) Griffith University, Nathan Campus » 2.4km (5min) Queen Elizabeth II Jubilee Hospital » 2.8km (5min) Salisbury Train Station » 3.3km (7min) Toohey Forest Park » 4.5km (8min) Moorooka Central » 5km (9min) Market Square Sunnybank » 5.1km (10min) Westfield Mt Gravatt » 10km Brisbane CBD

Don't miss this incredible opportunity. Contact us today to find out more. Note: All images have been used for sales & marketing purposes & should be used as a guide only. Dimensions approximate.