

Lot 403, Kapunda Street, Mount Perry, Qld 4671

Sold Residential Land

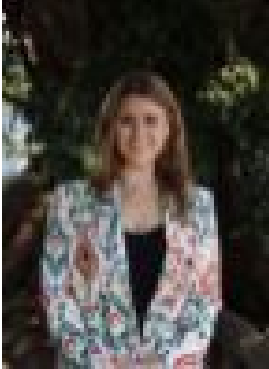
Sunday, 20 August 2023



Lot 403, Kapunda Street, Mount Perry, Qld 4671

Area: 1012 m2

Type: Residential Land



Tayla Bird

0402460732

Contact agent

Located in Mount Perry, where beautiful mountains surround the town. Just a short 2-minute drive to the main street, you will find a general store for essentials, a pub, a school, and a post office. Gin Gin is the closest town, a 35-minute drive with a large IGA for your groceries, and Bundaberg is just over an hour where you can get everything else! Subdivided 1012m² block, primarily flat, cleared, and far enough from the next-door neighbour for privacy. If you are looking to get out of the hustle and bustle of city living or looking for a tree change then this is the block and town for you. Power is also available - block highlighted in red in the second photo. More photos to come. For more information please contact Tayla Bird on 0402 460 732 or Michael Dempsey on 0417 605 755**Every effort has been made to verify the correct details of this marketing although, neither the agent, vendor nor illustrator takes any responsibility for any omission, wrongful inclusion, misdescription or typing error in this marketing material. All interested parties should make their enquiries to verify the information and satisfy any concerns they may have. All fixtures shown may not be included in the sale & questions must be directed to the agent.**