

Lot 420, Cosby View, Edgeworth, NSW 2285

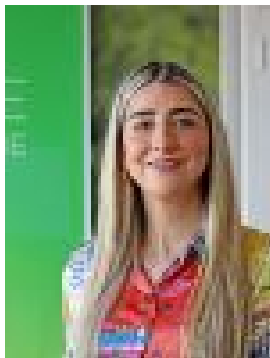
Residential Land For Sale

Saturday, 6 April 2024

Lot 420, Cosby View, Edgeworth, NSW 2285

Area: 1754 m2

Type: Residential Land



Cameron Grove Sales
0436910290

Awaiting Price Guide

Lot 420 is one of a kind site, amazing outlook and ideal for single or two storey homes. This block presents a unique opportunity for you to create your luxurious dream home basking in uninterrupted reserve views. Serenity meets comfort. Located on a whisper quiet pocket of the Estate, this land is conveniently located close to schools, shops, and Harrigan's Pub for all the family to enjoy. This lot is now registered and ready to build! Start your building journey now! Cameron Grove Estate is a well thought out, family-orientated development located close to shops, schools, the University of Newcastle, parks and recreational facilities. Just moments from the M1 and Hunter Expressway – Cameron Grove has it all! An ideal location to raise a family, Cameron Grove Estate offers not only luxurious modern homes but access to an easy, well-connected lifestyle. Within just a ten-minute drive, residents are connected to no less than 12 schools, including Edgeworth Heights and West Wallsend High School. School-age kids also enjoy an abundance of play areas nearby, including playgrounds, outdoor gyms, nature reserves and picnic areas, sport fields and running tracks, netball courts and even a skate park. For parents, a shopping centre, cafés and Woolworths, Harrigan's Irish Pub, Woolworths has already opened for business; situated just a 30-minute drive from Newcastle and a five-minute drive from the Hunter Expressway, plus enjoying close connections to major commuting routes within a ten-minute drive. Don't miss this opportunity! Give us a call to book your tour on site! We are open every weekend Saturday and Sunday from 10:00am-4:00pm