

Lot 427, 70 Pembroke Avenue, Edgeworth, NSW 2285

RIBA
REAL ESTATE

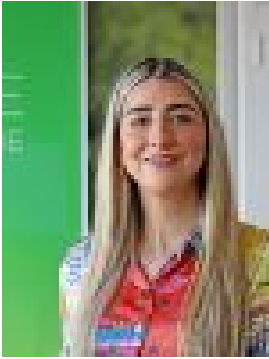
Residential Land For Sale

Saturday, 2 March 2024

Lot 427, 70 Pembroke Avenue, Edgeworth, NSW 2285

Area: 670 m2

Type: Residential Land



Cameron Grove Sales
0436910290

\$490,000

Welcome to a fantastic opportunity in Cameron Grove Estate. This 670m² generous block of land in our most sought-after Pembroke release is the ideal canvas for your dream home; this lot has a 15m frontage and is now registered and ready to build! This lot is ideal for two storey or split-level design homes. Cameron Grove Estate is a well thought out, family-orientated development located close to shops, schools, the University of Newcastle, parks and recreational facilities. Just moments from the M1 and Hunter Expressway – Cameron Grove has it all! An ideal location to raise a family, Cameron Grove Estate offers not only luxurious modern homes but access to an easy, well-connected lifestyle. Within just a ten-minute drive, residents are connected to no less than 12 schools, including Edgeworth Heights and West Wallsend High School. School-age kids also enjoy an abundance of play areas nearby, including playgrounds, outdoor gyms, nature reserves and picnic areas, sport fields and running tracks, netball courts and even a skate park. For parents, a shopping centre, cafés and Woolworths, Harrigan's Irish Pub already under construction directly within Cameron Grove Estate. Woolworths has already opened for business; situated just a 30-minute drive from Newcastle and a five-minute drive from the Hunter Expressway, plus enjoying close connections to major commuting routes within a ten minute drive. We are open every weekend Saturday and Sunday from 10:00am-4:00pm, give us a call to book your tour on site!