

**Lot 438, 32 Boronia Turn, Jurien Bay, WA 6516**

**Sold Residential Land**

Monday, 16 October 2023



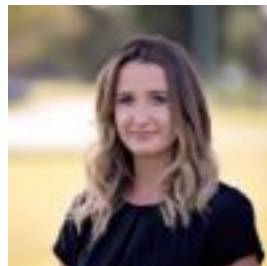
Lot 438, 32 Boronia Turn, Jurien Bay, WA 6516

Area: 785 m2

Type: Residential Land



Samantha Murdock  
0409104724



Phoebe Pini  
0468935751

**\$110,000**

• Established stage 1 beachridge block • 20m frontage x 39.2m depth • 785m<sup>2</sup> • Perfectly rectangular shape • Stone's throw from the famous Pirate Park • Less than 700m walk to the beach  
32 Boronia is located in the family friendly Beachridge Estate, with attractive Residential Design Guidelines and no time restrictions to build. Blocks in the established, earlier stages, closer to town centre are generally in high demand, especially being this close to Pirate Park. For more information, call me on 0409 104 724, or email me on [samantha.murdock@raywhite.com](mailto:samantha.murdock@raywhite.com)