

Lot 457, 68 Cosby View, Edgeworth, NSW 2285

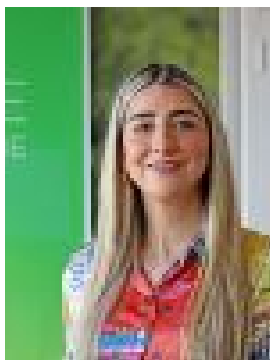
Residential Land For Sale

Friday, 3 May 2024

Lot 457, 68 Cosby View, Edgeworth, NSW 2285

Area: 505 m2

Type: Residential Land



Cameron Grove Sales
0436910290

\$530,000

Situated in ever popular Cameron Grove Estate, this 505m² block with two street frontages, boasting a 11.9m frontage + 7m splay is ready to be built upon. The area continues to grow, with established shops you'll have the pleasure of experiencing lovely cafes, restaurants, shops, medical centres and other amenities. Cameron Grove Estate is a well thought out, family-orientated development located close to shops, schools, the University of Newcastle, parks and recreational facilities. Just moments from the M1 and Hunter Expressway. – Cameron Grove has it all! An ideal location to raise a family, Cameron Grove Estate offers not only luxurious modern homes but access to an easy, well-connected lifestyle. Within just a ten-minute drive, residents are connected to no less than 12 schools, including Edgeworth Heights and West Wallsend High School. School-age kids also enjoy an abundance of play areas nearby, including playgrounds, outdoor gyms, nature reserves and picnic areas, sport fields and running tracks, netball courts and even a skate park. For parents, a shopping centre, cafés and Woolworths, Harrigan's Irish Pub directly within Cameron Grove Estate. Woolworths has already opened for business; situated just a 30-minute drive from Newcastle and a five-minute drive from the Hunter Expressway, plus enjoying close connections to major commuting routes within a ten-minute drive. We are welcoming you Thursday - Monday, via appointment at 28 Breakwell Road, Cameron Park NSW 2285 you can get in contact with us 02 4955 4820.