

Lot 480, Sunnymount Circuit, Bohle Plains, Qld 4817



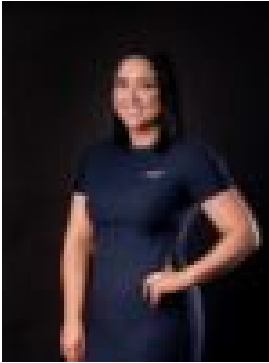
Residential Land For Sale

Thursday, 16 May 2024

Lot 480, Sunnymount Circuit, Bohle Plains, Qld 4817

Area: 700 m2

Type: Residential Land



Alex Bourne Harris Crossing
0455428932

\$269,000

Enjoy lush parklands right on your doorstep, with this premium block now available in our BRAND NEW Ironhurst Release!- Park-facing lot- 700m² on Sunnymount Circuit- Landscaped parklands & footpaths within walking distance from your home.To kickstart your new home journey at Harris Crossing, please call Alex on 0455 428 932 or visit the Sales Centre at 1 Lynwater Street, Bohle Plains. Open seven days 10am to 5pm.--A community that is only minutes away from Townsville's city centre, Harris Crossing gives you a new lifestyle choice. Surrounded by lush parkland and bordered by the Bohle River, Harris Crossing is located close to all the day-to-day services you need.- 3 Minutes to Willows Shopping Centre, Reading Cinemas and the Cannon Park Entertainment Precinct.- 4 Minutes from the Riverway Lagoons and Arts Centre.- 4-6 Minutes from quality childcare, primary and high schools.- Walking distance to fresh water fishing holes along the banks of the Bohle River.Be part of a dynamic community that is fast-growing, affordable and ideally located to suit your lifestyle needs. It's your chance to build a brand new home in a progressive and modern community, that's all about convenience and the flexibility to live life the way you want.- Located in the heart of Thuringowa Central, just 12km from the Townsville CBD. - When complete 800 families will call Harris Crossing home, on blocks ranging from 375sqm-1280sqm.- Enjoy more than 70 hectares of proposed parkland and green space which will include playgrounds, boardwalks, picnic areas, walking trails and natural riverbank access to the banks of the Bohle River.- With the Ring Road close by, you're well connected to Lavarack Barracks, Townsville Hospital and JCU, all within a few minutes' drive.