

Lot 5, Rosedale Road, Mullett Creek, Qld 4670

Sold Residential Land

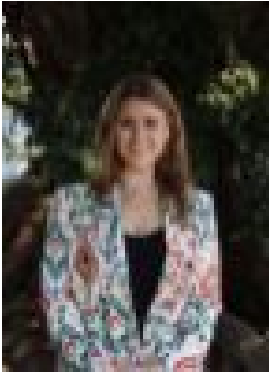
Monday, 14 August 2023



Lot 5, Rosedale Road, Mullett Creek, Qld 4670

Area: 8 m2

Type: Residential Land



Tayla Bird

0402460732

Contact agent

LOT 5 - Corner of Bindara Court and Rosedale Road, Mullett Creek Ideal Lifestyle block of just over 20 acres located on Rosedale road, 30 minutes from Bundaberg with Yandaran being the closest town just 7 minutes south, which has a general store, primary school and the local pub. Approximately 8 acres cleared for you to build your dream home with power to a pole on the block already there, an unequipped bore which is not metered that also gives the option to grow and sell produce. On the block is a seasonal creek that you could dam and some fencing however needs attending to. If you love the outdoors and fishing, you are in prime position with the mouth of the Kolan at Miara approx. 23km southeast of the property and Norville Park Beach just 24km northeast of the property with over 8km of beautiful beach. Rates are approx. \$900 per year Interested? Contact Tayla Bird on 0402 460 732 or Michael Dempsey on 0417 605 755 today! **Every effort has been made to verify the correct details of this marketing although, neither the agent, vendor nor illustrator takes any responsibility for any omission, wrongful inclusion, misdescription or typing error in this marketing material. All interested parties should make their enquiries to verify the information and satisfy any concerns they may have. All fixtures shown may not be included in the sale & questions must be directed to the agent. **