

Lot 62 Havenside Drive @ Haven Estate, Garbutt, Qld



4814

House For Sale

Saturday, 2 March 2024

Lot 62 Havenside Drive @ Haven Estate, Garbutt, Qld 4814

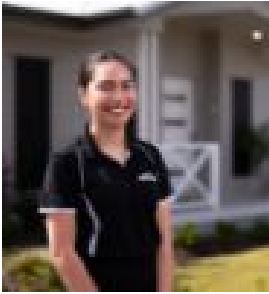
Bedrooms: 3

Bathrooms: 2

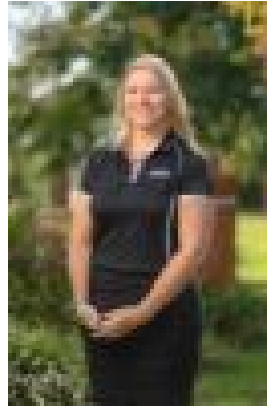
Parkings: 2

Area: 272 m2

Type: House



Shayley Connelly
1300455557



Sarah Wheatley
0411690859

\$442,750 house & land package with FHOG!

Nowhere else in Townsville can you build a brand new home on a low maintenance block under 3kms from the CBD and still have room for a swimming pool! THE ABODE ALFRESCO is our brand new, ready-to-build, 3 bedroom design at HAVEN Estate with the following features...- On arrival you're greeted with a perfectly located home office / study area, away from your personal living space- Your living area is located at the rear of the home opening up to your low maintenance backyard and outdoor patio- A lovely Master Suite with its own private ensuite bathroom and walk-in robe- Bedrooms 2 & 3 are separated by the main bathroom- Shaded outdoor entertaining offer luxury tiles and a ceiling fan to keep you cool in the warmer months

Why build at HAVEN Estate?...
1. Location! Location! Location! Closest new residential estate to the CBD and The Strand
2. Surrounded by Amenities – Major Retailers, Schools, Medical, Transport, Barracks, Entertainment...
3. Low Maintenance Living – more time to maintain your lifestyle, instead of your yard
4. Master-Planned Estate – one builder only, high-valued boutique-estate, no through-traffic
5. Cleverly designed, modern, inner-city, stylish urban homes
6. Full Turnkey Luxury Homes – you only need to bring your furniture and belongings and move in
7. Views of Castle Hill from every block
8. Surrounded by Nature – Haven's own Harry's Park, Melrose Park, Cutheringa Park & Harold Phillips Park
9. Something for Everyone – we cater for First home buyers, Families, Couples, Singles, Down-sizers, and more...

Haven's dedicated builder is the award-winning Ellis Developments Qld, a local builder with over 30 combined years' experience in the building industry, you can take comfort in knowing the construction of your new home is in good hands. Paired with an amazing client experience from start to finish, our team of professionals will work with you to create a beautiful home that meets all your requirements, especially your budget. With communication and client focus of utmost importance to us, you can be assured that the building process will be a positive experience from start to finish.

Here's just a small taste of some of the high-quality inclusions you will receive in your new home:- Full landscaping incl. fencing, turfing & automatic irrigation- 2.7m ceiling heights with elegant three-step cornice throughout open plan living areas- 3-tier termite management system- High-quality fixtures and finishes to choose from in our extensive builders range- Private consultation with our professional interior designer- Air conditioning & ceiling fans to all bedrooms and living areas- German-engineered, soft-close cabinetry and stone benchtops to kitchen and bathrooms- Luxurious 600x600 porcelain, rectified-edge tiles to open plan living, bathrooms and outdoor living- Black out blinds to all windows and sliding glass doors- LED downlights throughout- Security screens on all windows and doors- Plus much, much more...Contact Shayley to arrange a viewing of this product, or to receive a full breakdown of plans and pricing. Don't forget our Haven Display Home at 1 Castleview Lane, is open every Thursday to Monday (incl. weekends), from 10am - 4pm.