

Lot 622 Fenchurch Drive, Hilbert, WA 6112

House For Sale

Thursday, 13 June 2024



Lot 622 Fenchurch Drive, Hilbert, WA 6112

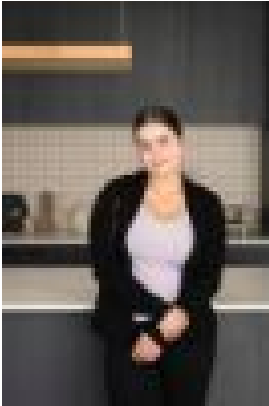
Bedrooms: 4

Bathrooms: 2

Parkings: 2

Area: 315 m2

Type: House



Jess Bull

0412107325

\$596,990

Enjoy the peace of mind of a Brand New Home, Designed with Modern Living in mind and with the ultimate in eco-friendly features – This stunning B1 Home will see you livin' life to the max, whilst minimising your utility bills! Positioned perfectly within the Avenue Estate, You will enjoy a fantastic lifestyle, being close to Schools, lush green parks, amazing shopping and close to the Freeway and Public Transport for easy access to work and beyond. What you need to know about the build.... Stunning B1 Homes "Hermosa" design: - 4 bed including master with WIR & ensuite. - 2 bath. - 2 car garage. - 1 living area. - Large Kitchen with stone benchtops and spacious area. - Alfresco. Industry leading complete specification including: - Full circle promotion with 12 month price hold period, 12 month build guarantee & 12 month maintenance period! - Double clay brick construction - 28 course ceilings throughout. - Choice of 3 x Designer Elevations with two tone acrylic render. - Premium eco-logical front yard landscaping package, side & rear fencing, and a connection to the fiber optic network. - Soft close drawers & cupboards. - BCA compliant. - HIA fixed price contract. - Full working drawings. - Full indemnity insurance. - Lifetime structural guarantee! What you need to know about your builder, B1 Homes.... YOU'RE IN GOOD HANDS! We're part of the Scott Park Group – which means you can have peace of mind. The Scott Park Group continues to strive in its pursuit of delivering outstanding service through its various building brands and across its core businesses. As one of the fastest growing building groups nationally we continue to train, innovate and deliver great outcomes to the most important people we know....our customers. This single minded focus is the driving force and continues to direct our efforts now and into the future. Meet Scott Park.... Scott Park entered the building game as a carpenter at 17. Before he was 30, Scott built his first home and founded his first building company. From day one, Scott's vision was all about delivering superior customer service and building outstanding homes. Now, over 25 years on, Scott's customer centric approach is the driving force behind all Scott Park Group brands: B1 Homes, Redink Homes, 101 Residential, Lets Finance, SP Ceilings & Insulation, Glass CO Metro, and SPG Site Services. What you need to know about the location.... Don't miss your chance to secure one of these perfectly positioned lots in The Avenue Estate's Stage 12. Located just north-west of Byford, The Avenue Estate is a thriving, modern community only 30 minutes drive from the Perth CBD. Blocks in Stage 12 are located just 15 minutes from Cockburn Central, meaning your home is connected to life's essentials. Plus, The Avenue is in the catchment area for both Forrestdale Primary School and West Byford Primary School, and within a short drive from several secondary schools allowing you to have the freedom of choice. What you need to know about the numbers.... Owner occupier? First home buyer? Complete Home Loan Calculator below to work out approximate repayment. Need help with finance or a 2nd opinion? We have in house finance options available, and can help with most scenarios. If high debt levels, bad credit score or unusual income sources have been holding you back in the past, don't let it hold you back any longer! With a rapidly growing market, rising rental costs and a return to very reasonable building time frames, this really is a fantastic time to build an investment property, your next home....Or your first! Hit "Get in touch" + "Send enquiry" buttons and we'll be right with you! Please include a Mobile Phone Number so we can SMS you everything you need. Don't miss out....this incredible opportunity won't last long!! _____ Note: Pricing Advertised includes \$10,000 First Home Owners Grant & any land rebates associated with the lot. Sources: realestate.com, SQM Research, Australian Bureau of Statistics, REIWA. Disclaimer: Photographs on this page may depict fixtures, finishes and features not supplied by B1 Homes and not included in any pricing specified. They may not be representative of the Plan or Elevation included within the advertised price. B1 Homes BRN 14299 Full Terms and Conditions of this listing available at www.b1homes.com.au/terms-conditions/