

# Lot 7083 Juniper Street, North Shore, Burdell, Qld 4818



## House For Sale

Sunday, 5 May 2024

Lot 7083 Juniper Street, North Shore, Burdell, Qld 4818

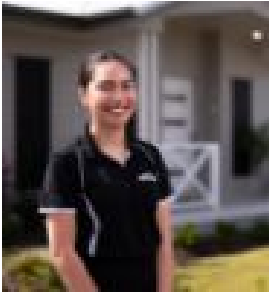
Bedrooms: 4

Bathrooms: 2

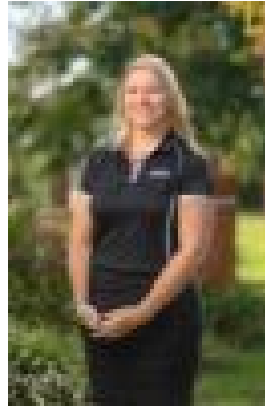
Parkings: 4

Area: 481 m2

Type: House



Shayley Connelly  
1300455557



Sarah Wheatley  
0411690859

## **\$513,675 with First Home Owners Grant**

This brand new 4 bedroom house and land package is located in one of North Townsville's largest residential estates, North Shore at Burdell. Plenty of amenities are available here, including 3 schools, 9 parks, 8 playgrounds, 300 hectares of bushland, 9km of walking trails and a 6km Green Spine Parkland Corridor. The Stockland North Shore shopping centre makes your weekly shop a breeze. The growing North Shore Town Centre also features a Bunnings, McDonalds, weekly farmers market and medical services including a vet and medical centre. THE CUBE design by multi-award winning builder, Ellis Developments, is a fully featured design including - Large U-shape kitchen with plenty of bench space- Spacious and open living area - Dedicated office/study at the front of the house, perfect for a home business- Spacious outdoor living space for entertaining or BBQ's. Ellis Developments prides itself on an unwavering commitment to customer service while also delivering quality finishes on a truly masterful design. Our standard inclusions are: - 2700mm ceiling heights - Full landscaping including turf, planting and automatic/digital irrigation- Exposed aggregate driveway, mailbox & NBN included- Covered & tiled alfresco area- LED downlights to kitchen, living and dining- Stone benchtops throughout- Chrome mixer tapware- Stainless steel kitchen appliances- Soft-close kitchen cabinetry- Split system air conditioning to all bedrooms and living areas- Ceiling fans to all bedrooms and living areas- Tiles to all living areas- Carpet to bedrooms- Colorbond roofing- Mirrored robes to bedrooms- Efficient Electric hot water system- Security screens on all windows and sliding glass door- Termimesh termite prevention system- Up to H2 soil & C2 wind classification

Creating your perfect home is our priority. We tailor your package to help complete your vision of what your home should be, while still offering the high levels of design and finish that we pride ourselves on. Call me today to arrange to receive a full breakdown of plans and specifications. \*This is a new build-to-order home - images are indicative only as you tailor the home to your personal taste from our luxury range of fixtures and colour choices. \*\*Sign a build contract between 1 April 2024 and 30 June 2024 and receive FREE lawn mowing for 6 months after Handover!! T&C's apply.