

# Lot 719, Willandra Way, Edgeworth, NSW 2285

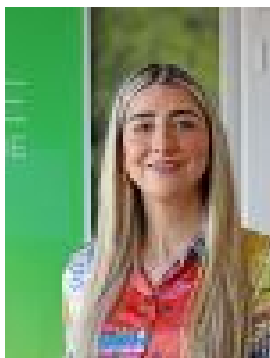
## Residential Land For Sale

Monday, 10 June 2024

Lot 719, Willandra Way, Edgeworth, NSW 2285

Area: 562 m2

Type: Residential Land



Cameron Grove Sales  
0436910290

**\$570,000**

Presenting this fantastic corner block of land in the heart of the ever-popular Cameron Grove Estate, this generous size lot is now available providing sleek, unbroken bushland views and a sense of prestige. This is once in a lifetime opportunity! Nature meets convenience in this quiet pocket of the Estate. With Reserve views this is an ideal location to build a family home. Secure this well positioned block today and enjoy the benefits of a tranquil and peaceful lifestyle! Boasting an expansive 562m<sup>2</sup> within a stone's throw to Restaurants, Schools, Cameron Park Shopping Plaza and Sporting fields. Features:- Generous 562sqm corner block- 18.4m wide frontage- Registered and Ready to build- Dual street frontages- Duplex potential subject to STCA Location Features: • Breathtaking Reserve Views with bushland surrounds • Cameron Park Shopping Plaza within 5mins drive • Harrigan's Irish Pub newly opened in Cameron Park • 10 mins drive to Cardiff Train Station • 30-minute drive to Newcastle CBD approx 19km • Road trips made convenient with easy access to motorways - Just moments from the M1, A15 and Hunter Expressway • Within just a ten-minute drive, residents are connected to no less than 12 schools Cameron Grove Estate is a well thought out, family-orientated development located close to shops, schools, the University of Newcastle, parks and recreational facilities - Cameron Grove has it all! The size of the block and the location cannot be replicated, you will not find an opportunity of this size, this close to the major amenities in one of the fastest growing suburbs in Newcastle. We are welcoming you Thursday - Monday, via appointment at 28 Breakwell Road, Cameron Park NSW 2285 you can get in contact with us 02 4955 4820.