

Lot 720, Jesmond Way, Edgeworth, NSW 2285

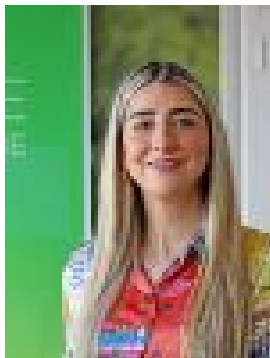
Residential Land For Sale

Saturday, 4 May 2024

Lot 720, Jesmond Way, Edgeworth, NSW 2285

Area: 531 m2

Type: Residential Land



Cameron Grove Sales
0436910290

\$515,000

Boasting an expansive 531m² within a stone's throw to restaurants, school, Cameron Park Shopping Plaza and Sporting fields. With the ability to construct two separate Torrens title homes, or your forever home you truly are spoiled with options here! The size of the block and the location cannot be replicated, you will not find an opportunity of this size, this close to the major amenities in one of the fastest growing suburbs in Newcastle! Featuring- 531m² block with 15 wide frontage - Registration expected mid 2024 - Proposed new daycare centre within the neighbourhood- Magnificent views towards the Reserve - 30min drive to the Newcastle city & beaches An ideal location to raise a family, Cameron Grove Estate offers not only luxurious modern homes but access to an easy, well-connected lifestyle. Within just a ten-minute drive, residents are connected to no less than 12 schools, including Edgeworth Heights and West Wallsend High School. School-age kids also enjoy an abundance of play areas nearby, including playgrounds, outdoor gyms, nature reserves and picnic areas, sport fields and running tracks, netball courts and even a skate park. For parents, a shopping centre, cafés and Woolworths, Harrigan's Irish Pub in Cameron Park. Woolworths has already opened for business; situated just a 30-minute drive from Newcastle and a five-minute drive from the Hunter Expressway, plus enjoying close connections to major commuting routes within a ten minute drive. We are open every Thursday -Monday from 10:00am-4:00pm, give us a call on 0436 910 290 to book your tour on site!