

# Lot 7839 Woodlea, Aintree, Vic 3336



## House For Sale

Saturday, 18 May 2024

Lot 7839 Woodlea, Aintree, Vic 3336

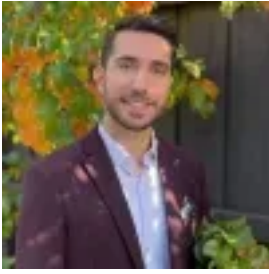
**Bedrooms: 4**

**Bathrooms: 2**

**Parkings: 2**

**Area: 400 m2**

**Type: House**



Kosta Avyerinos

0423457989

**\$869,500**

The Redcliffe offers everything you need to entertain your family and friends; large open-plan kitchen, living and meals area, dedicated theatre room, and alfresco dining for warm summer days. The spacious bedrooms, all with walk-in robes, and private master suite make this the perfect home for the family. **INSPIRE INCLUSIONS:** Fixed price site costs and connections Developer and council requirements 20mm Caesarstone to kitchen benchtop Fisher & Paykel kitchen appliances Clear glass splashback or tiles to kitchen Opulent Bathroom fit-out 20mm Caesarstone to bathroom and ensuite(s) benchtops Laundry fit-out Double glazing to windows Feature staircase balustrade LED lighting Upgraded H-Class slab Entertainer door \$5,000 off fully rendered Hebel facades \*7 Star energy rating \*Pricing based on developer engineering plans & plan of subdivision. Hebel homes may be smaller than dimensions shown on the floorplan due the external wall thickness, see working drawings for Hebel home dimensions. Confirm land prices and availability prior to purchase. Community Infrastructure Levy & Asset Protection not included in pricing and must be arranged directly by client with developer (where applicable). Subject to developer & council approval. Package Price does not include any costs associated with Developer's Corner Facade treatment requirements (which will be priced by Carlisle Homes by way of Post Contract Variation), stamp duty, government, legal or bank charges. Images for illustrative purposes only & may depict upgrade options available at additional charges such as lighting, window furnishings, timber look garage door & timber windows. Pricing also excludes features not supplied by Carlisle, inc fencing, landscaping, letterbox, decking & driveway. Facade details inc entry door, window sizes & placements may vary between house types & sizes. Refer to working drawings for specific locations and sizes. Alterations may incur additional charges. Carlisle reserves the right to withdraw or amend pricing, inclusions and promo without notice. Bushfire (BAL) requirements will be credited back to the client if Carlisle Homes receives confirmation that the house is not being constructed in a BAL designated area. This cannot be confirmed until site survey and property information from relevant authorities is received. 'Live Like A Star' Promotion applies to new quotes and initial deposits on Carlisle's Inspire homes from 1 May 2024, and is not available in conjunction with any other offers. LED downlights will be located in electrical appointment. Double Glazing excludes entertainer door. \*Hebel discount taken off full retail price. Images are for illustrative purposes only and may depict upgrade options available. Carlisle reserves the right to withdraw or change pricing, inclusions or promotion without notice. Speak to a Sales Consultant for further details or visit [carlislehomes.com.au/disclaimer](http://carlislehomes.com.au/disclaimer). Registered Building Practitioner CDB-U 50143.