

# Lot 80/33 Skybury Street, Ormeau, Qld 4208

## House For Sale

Monday, 11 December 2023

Lot 80/33 Skybury Street, Ormeau, Qld 4208

**Bedrooms: 4**

**Bathrooms: 2**

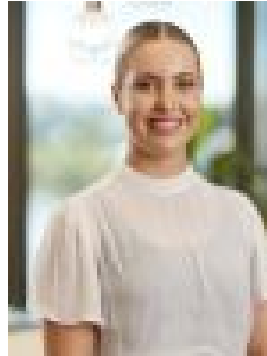
**Parkings: 2**

**Area: 394 m2**

**Type: House**



Olga Levitt



Tayla DeutscherMoore  
0497615900

**\$876,000**

The Amara community is perfectly positioned halfway between Brisbane and the Gold Coast on the eastern side of M1, only 10 minutes from the Jacobs Well waterfront. There is a wide choice of childcare and schools, established shops and plenty of existing parklands, sports fields, and playgrounds, most accessible within walking distance. The area is also well-serviced by public transport – the bus stop is only 500m away, the Ormeau Train Station is 3.5km, and M1 is 3 km. The perfect design for comfort, space and versatility, the Monaco 24 cleverly separates the quiet, private master suite, with its own luxury ensuite and walk-in robe, from the family life and activity of the living spaces, and the three well-proportioned secondary bedrooms. The open-style living area combines the gourmet kitchen, with the casual dining and living rooms in a stunning space that's ideal for relaxing with family and friends. A superbly-appointed multi-purpose room, soaks up the natural light by day and creates a quiet retreat by night, and is ideal a media room, home office or formal sitting room. Add the versatility of three secondary bedrooms sharing an elegant bathroom, and you've created the ideal zone for kids to call their own. A convenient alfresco patio, rounds out the brilliant features of this exceptional residence. A fixed price contract with everything you could want, including: \* Ducted Air-conditioning\* Roller Blinds\* Fly screens\* Landscaping\* Solar Panels\* Premium Westinghouse appliances\* Walk-in Pantry \* 2570mm Ceilings At Amara, everything is taken care of. That peace of mind also extends to the fixed-price guarantee, with no unexpected costs. Enquire today on how to secure this home today. Completion mid 2024.\*\* Please note internal images are for interior colours only- The design may differ