

Lot 8096 New Meadow Circuit, Greater Ascot, Shaw, Qld 4818



House For Sale

Sunday, 5 May 2024

Lot 8096 New Meadow Circuit, Greater Ascot, Shaw, Qld 4818

Bedrooms: 4

Bathrooms: 2

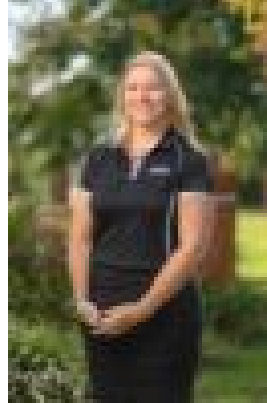
Parkings: 4

Area: 510 m2

Type: House



Shayley Connelly
1300455557



Sarah Wheatley
0411690859

\$515,540 House and Land Package

The MONTEREY is a high end yet low maintenance modern inner city home fusing architectural brilliance with a well thought out floorplan. Offering the highest level of standard inclusions in the local market, Ellis Developments prides itself on an unwavering commitment to customer service while also delivering the most up-to-date finishings on a truly masterful design. Our standard luxury inclusions are: * 2700 high ceilings * Stone benchtops to kitchen with 40mm finish to island bench * Stone benchtops to all bathroom vanities and laundry * Feature 3 step cornice in living/dining area * Custom Cabinets with soft close doors and drawers * Undermount rangehood with electric cooktop and feature airfry oven * Fully airconditioned with split systems (all bedrooms and living, not just the master bedroom!) * LED downlights throughout * Security screens to all windows and sliding glass doors * Premium Tapware and tiles up to 600mm x 600mm included * Letterbox, 60m² of exposed aggregate driveway and clothesline. * Turf, irrigation and fencing included to entire block Swinley Forest offers relaxed living and a spectacular outlook on the surrounding bushland with nature right at your doorstep. This release offers peace and tranquility in a quiet pocket on the outskirts of the estate. Conveniently situated off Greater Ascot Avenue, Swinley Forest is only a short drive to the main entrance of Greater Ascot. It is a great place to live or have an investment. Visit our Haven display home at 1 Castlevue Lane, Garbutt - open 9am until 5pm Thursdays through to Mondays. **Sign a build contract between 1 April 2024 and 30 June 2024 and receive FREE lawn mowing for 6 months after Handover!! T&