

Lot 811 Calabria Street, Hammond Park, WA 6164



House For Sale

Friday, 2 February 2024

Lot 811 Calabria Street, Hammond Park, WA 6164

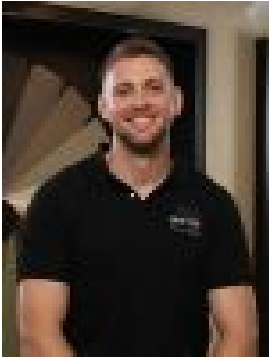
Bedrooms: 4

Bathrooms: 2

Parkings: 2

Area: 304 m2

Type: House



Ryan Sumich
0478611640

\$506,980

Exceptional Family Home near Top Schools and Exciting Amenities! Welcome to your dream home in the vibrant community of Vivente, Hammond Park! Nestled just 27km from Perth CBD, this immaculate residence offers the perfect blend of convenience, comfort, and style. As you step inside, you'll be greeted by spacious interiors flooded with natural light, creating an inviting ambiance for family gatherings and entertaining guests. The open-plan layout seamlessly connects the living, dining, and kitchen areas, providing a versatile space for modern living. The gourmet kitchen is a chef's delight, featuring sleek appliances, ample storage, and a large island benchtop where you can whip up culinary delights while engaging with loved ones. Retreat to the luxurious master suite, complete with a walk-in wardrobe and ensuite bathroom, offering a private oasis to unwind after a long day. Additional bedrooms provide plenty of space for children, guests, or home office setups, ensuring everyone has their own sanctuary. Outside, the alfresco area beckons for weekend barbecues or lazy Sunday brunches, overlooking lush greenery and Vivente's central parkland. With Cockburn Gateway Shopping City, top schools, and recreational facilities just moments away, every convenience is at your doorstep. Don't miss the opportunity to make this your forever home in one of Hammond Park's most sought-after neighborhoods. Schedule your inspection today and experience the epitome of modern family living! 🏡 4 Bedrooms | 2 Bathrooms | Double Garage 🏡 Spacious Open-Plan Design 🏡 Gourmet Kitchen with Island Bench 🏡 Luxurious Master Suite with Walk-In Wardrobe 🏡 Alfresco Entertaining Area 🏡 Close to Schools, Shops, and Recreation Contact us now for more info and secure your slice of paradise!