

Lot 9 Orchard Circuit, Mango grove, Alligator Creek, Qld 4816



Acresage For Sale

Saturday, 2 March 2024

Lot 9 Orchard Circuit, Mango grove, Alligator Creek, Qld 4816

Bedrooms: 5

Bathrooms: 2

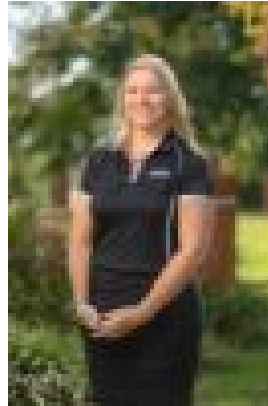
Parkings: 2

Area: 4080 m2

Type: Acresage



Ian Maloney
0423960127



Sarah Wheatley
0411690859

\$698,480 With First Home Owners Grant

Welcome to the epitome of Southern charm with the Charleston Design. Picture yourself on the large front porch, an ideal spot to relax on hot summer days, sipping sweet tea and enjoying the tranquility of your surroundings. This versatile 5-bedroom design offers flexibility with a media room that can easily transform into a 6th bedroom, adapting to the changing needs of your family and with the Large master suite and walk in robe which is a perfect parents retreat. Ellis Developments are an award winning local Townsville builder, taking out the National Master Builders award in November 2023 for our 'Haven' display home. You can be rest assured that the communication process and quality finishes we provide will have you feeling excited about the building process and ecstatic to receive the keys to your investment. Offering the highest level of standard inclusions in the local market, Ellis Developments prides itself on an unwavering commitment to customer service while also delivering the most up-to-date finishings on a truly masterful design. Our standard luxury inclusions are: * 2700mm high ceilings with 3 step cornices to living areas * Soft close kitchen cabinetry with Stone tops through out * Stainless steel appliances * Fully airconditioned * LED Lights * Security screens * Mirror doors to Robes * Roller and panel glide blinds * Driveway, clothesline, mailbox and NBN included * Garden Bed to front yard * Choice of colours and finishes * 7 year Structural warranty * Septic System Mango Grove is located on Williams Road, Alligator Creek just off the Bruce Highway and is surrounded by large Mango Trees. There is no covenant requirements in this soon to be 20+ acreage estate. This block is titled and ready to build on now. Offering the highest level of standard inclusions in the local market, Ellis Developments prides itself on an unwavering commitment to customer service while also delivering the most up-to-date finishings on a truly masterful design. *All prices correct at time of posting.