

Lot One, 79 Murray Farm Road, Beecroft, NSW 2119

STONE

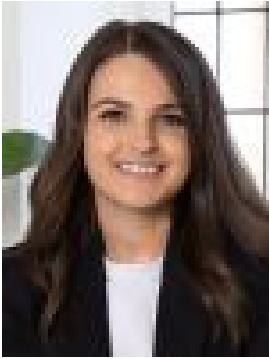
Sold Residential Land

Monday, 29 April 2024

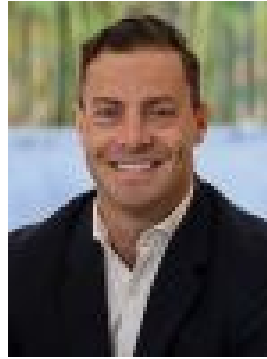
Lot One, 79 Murray Farm Road, Beecroft, NSW 2119

Area: 674 m2

Type: Residential Land



Chloe Mawass
0288661500



James Ramsay
0288661500

\$1,789,000

A rare opportunity to build your dream home on a street frontage block in a highly coveted position. Spanning 674.8sqm with a 29.1m frontage of level land with no easements, it is ideally located within the catchment for Cheltenham Girls, Carlingford High, and Roselea Public. Land registration is complete. • Peacefully surrounded by high quality established properties • Generous building envelopes to build your dream home (STCA) • Sought after local school catchments and accessible to an array of Private schooling; Kings, Tara and Arden. • 20m from buses traveling to Beecroft station • 600m to Bingara Road Reserve, and 900m to Hazlewood Rose Park • 1.1km to North Carlingford Village and 1.8km to Beecroft Village and Station • Easy access to arterial roads, M2, M7 and the NorthConnex