

Proposed Lot 2, 33 Churchill Street, Churchill, Qld 4305



Sold Residential Land

Saturday, 25 November 2023

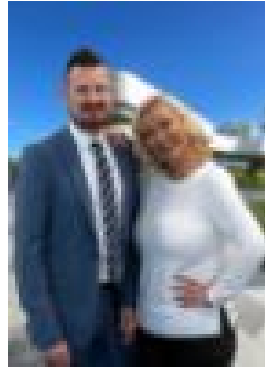
Proposed Lot 2, 33 Churchill Street, Churchill, Qld 4305

Area: 500 m2

Type: Residential Land



Glenn Ball
0499081445



Lisa Jensen
0499081445

\$243,000

• THIS GREAT BLOCK IS FLOOD FREE • SITTING IN A CENTRAL STREET • MINUTES TO SCHOOLS AND SHOPS • CHURCHILL IS A TIGHTLY HELD SUBURB • QUICK ACCESS TO HIGHWAY & UNI • PERFECT SITE TO LIVE OR INVEST • NO COVENANTS OR RESTRAINTS • NO UNDERMINING • HUGE 24m FRONTAGE ALLOWING SIDE ACCESS

When buying Real Estate, location is paramount and this great block of flood free land is perfectly positioned for future growth. Positioned in a tightly held suburb of mainly owner occupied homes you will find this gently sloping 500m² block of land. Backing onto bushland it gives the feel and illusion of being in the country yet offers all of the city conveniences. A short walk away is the Churchill State School, a quick drive and you will arrive at the state of the art Bremer State High School and the University of Queensland Ipswich Campus. The neighbouring suburb of Yamanto is currently booming and offers Yamanto Central Shopping Centre which boasts a new Cole and many Specialty shops as well as a Woolworths, Super Amart Furniture and a brand new Homemaker Centre planned to be built and is less than a 10 minute drive. This block is currently in the process of having titles issued and due to the size and contours it presents perfectly for a low set brick home to be built on the site or you could create an architectural masterpiece, the choice is yours. Appealing to savvy investors who would like a strong rental return once built or a family who are looking for a great place to raise a family this block caters to all needs. Churchill is only 42 minutes' drive from the Brisbane CBD (44.3km) and only a short 7 minute drive from the Ipswich CBD and Train station. You will find the Amberley RAAF Base is a short 10-15 minute drive away. Local bus services frequent the area and the choice of Shops, Schools, Parks and recreation facilities are abundant. All enquiries can be made by contacting the listing agents Glenn Ball and Lisa Jensen at First National Action Realty Ipswich today. Currently we are working with local builders to prepare draft building plans if you are interested and will be available on request. **DISCLAIMER:** First National Action Realty has taken all reasonable steps to ensure that the information contained in this advertisement is true and correct but accept no responsibility and disclaim all liability in respect to any errors, omissions, inaccuracies or misstatements contained. All distances, measurements and timeframes contained within this advertisement are approximate only. Prospective purchasers should make their own enquiries to verify the information contained in this advertisement.