

10 Torrance Street, Mickleham, Vic 3064



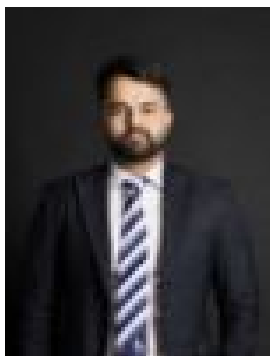
Residential Land For Sale

Sunday, 23 June 2024

10 Torrance Street, Mickleham, Vic 3064

Area: 375 m2

Type: Residential Land



Jatin Mehta
0426973800

\$290k - \$319k

Prime Vacant Land in Mickleham - Build Your Dream Home! Discover the perfect opportunity to build your dream home on this superb vacant land located at 10 Torrance Street, Mickleham. Land Size: 375 sqm (12.5m x 30m) Title: Vacant Land Situated in a desirable neighborhood, this parcel of land presents an ideal canvas for creating a custom-designed residence tailored to your lifestyle. With ample space measuring 12.5 meters wide and 30 meters deep, you have the flexibility to build a spacious home with room to spare for outdoor living and landscaping. Key Features: Generous 375 sqm land size, providing plenty of space for your dream home. Ideal dimensions of 12.5 meters frontage and 30 meters depth. Located in a sought-after area of Mickleham, offering a peaceful and family-friendly environment. Close proximity to local amenities, schools, parks, and transport links for added convenience. Whether you're looking to build your first home, upgrade to accommodate a growing family, or invest in a promising location, this land offers endless possibilities. Don't miss out on this rare opportunity to secure your slice of Mickleham. Enquire today to make this land yours and start building your future!