

11 Bonny Hills Drive, Little Hartley, NSW 2790



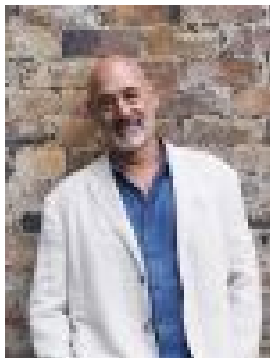
Residential Land For Sale

Tuesday, 2 July 2024

11 Bonny Hills Drive, Little Hartley, NSW 2790

Area: 3 m2

Type: Residential Land



Lewis Thyer
0430043806



Adele Colman
0414876211

\$580,000 - \$620,000

Set on the junction of Baaners Lane and Bonny Hills Drive this gently sloping 3.36 Hectare lifestyle block is a winner. Weed free with well maintained fences mean this block is ready to go and with easy access to the Great western Highway shopping is a breeze with Lithgow just down the road and the quirky shops of the Blue Mountains Villages just 15 minutes away. Sydney is also an easy two hour motorway drive away so the potential is there for a two day commute to the city and work from home for the rest of the week. The gently sloping site means your home will have expansive views of the Blue Mountains escarpments across the existing and well established sparkling large dam in the foreground (STCA). This is an opportunity as large blocks like this are hard to find that are so well located and in such good order. • Excellent sealed road access • Large established farm dam • Well maintained and weed free • A terrific lifestyle opportunity • Lithgow Council area