

15 Giant Road, Tarneit, Vic 3029



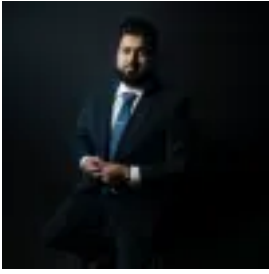
Sold Residential Land

Wednesday, 19 June 2024

15 Giant Road, Tarneit, Vic 3029

Area: 350 m2

Type: Residential Land



Mohit Batra
0391909991



Mohinder Sohal
0435077073

\$380,000

Introducing to you this stunning block of land in the prestigious Wattle Park, Tarneit, Unique & Co. Real Estate Group stands tall with immense pride. This extraordinary opportunity allows you to unleash your wildest dreams and create the perfect home from scratch. With limitless possibilities, you have the power to bring any design to life, fulfilling your heart's deepest desires. Wattle Park the estate offers:- Tree lined streets, with a neighbourhood situated along the riverfront- Surrounded by nature with the chance to explore future walking trails- Abundance of established and thriving schools, shopping centres, parks and transport- 33km from Melbourne CBD Time is of the essence, as this extraordinary opportunity won't be available for long! If you're ready to embark on an amazing journey in the Ellarook Estate, where an active and healthy lifestyle awaits, reach out to Mohit 0483 000 009. For your convenience, please find the link below to access an up-to-date copy of the Due Diligence Check

List: <http://www.consumer.vic.gov.au/duediligencechecklist> DISCLAIMER: While we strive to provide accurate information, all stated dimensions are approximate.