

18 Petrel Crescent, Thompson Beach, SA 5501

Residential Land For Sale

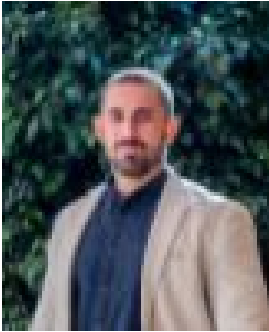
Wednesday, 19 June 2024



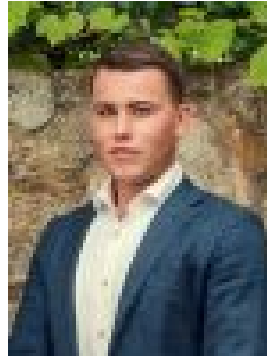
18 Petrel Crescent, Thompson Beach, SA 5501

Area: 985 m2

Type: Residential Land



Jamie Wood
0403592500



Connor Young
0402775599

Auction Online | Unless Sold Prior

Welcome to 18 Petrel Crescent, Thompson Beach! Discover your dream lifestyle with this exceptional 985 sqm block of land in the picturesque Thompson Beach. With ample space to design and build your perfect home, this generous block provides endless possibilities for creating your coastal retreat! With power availability, making it easy to start building your dream home without delay. Perfectly positioned just a short stroll from a renowned crabbing and fishing beach, this property offers the ideal setting for relaxing and soaking up the sun. Imagine waking up to the sound of the waves, spending your days exploring the beach, and enjoying the tranquil beauty of Thompson Beach. This is a rare opportunity to secure a slice of paradise, register your interest today with Jamie Wood on 0403 592 500 today!

Features:- 985 sqm (approx.)- 24 m frontage- Power available- Zoned: RuS - Rural Settlement\\- Adelaide Plains Council- Walking distance to the main esplanade and beach- Close to Port Wakefield Highway, Nature walks and Bird Sanctuary - 10 minutes (approx.) to the Two Wells Main Street

This property will be going to Auction unless SOLD prior, to register your interest please phone Jamie Wood on 0403 592 500 or Connor Young on 0402 775 599.

The safety of our clients, staff and the community is extremely important to us, so we have implemented strict hygiene policies at all of our properties. We welcome your enquiry and look forward to hearing from you.

RLA 284373*Disclaimer: Neither the Agent nor the Vendor accept any liability for any error or omission in this advertisement. All information provided has been obtained from sources we believe to be accurate, however, we cannot guarantee the information is accurate and we accept no liability for any errors or omissions. Any prospective purchaser should not rely solely on 3rd party information providers to confirm the details of this property or land and are advised to enquire directly with the agent in order to review the certificate of title and local government details provided with the completed Form 1 vendor statement.