

**2-6 Killawarra Drive, Taree, NSW 2430**



**Residential Land For Sale**

Wednesday, 3 July 2024

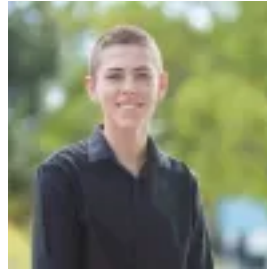
2-6 Killawarra Drive, Taree, NSW 2430

Area: 2574 m2

Type: Residential Land



Matt Burnett  
0265577222



Kyler Johnston  
0265577222

## **Auction**

Welcome to 2-6 Killawarra Drive Taree - a rare opportunity to secure a spacious residential parcel in Taree. Situated on a generous 2574.1 sqm parcel, this property offers endless possibilities, with ample space for multiple development opportunities. Conveniently located in a peaceful neighbourhood, this property is just a short drive away from schools, shops, parks, and all amenities. With 3 separate titles selling as a job lot, secure this development opportunity today.