

2 Allegro Walk, Junction Village, Vic 3977

Residential Land For Sale

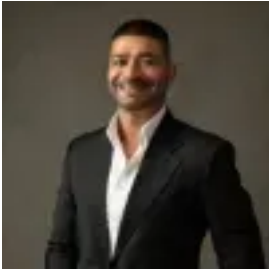
Wednesday, 19 June 2024



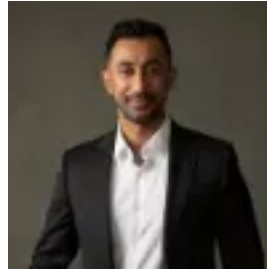
2 Allegro Walk, Junction Village, Vic 3977

Area: 364 m2

Type: Residential Land



Sanjay Singh
0359913888



Vas Selvaraj
0359913888

\$400,000-\$440,000

Discover the perfect place to build your dream home at 2 Allegro Walk, Junction Village. Nestled in a serene neighborhood, this prime piece of residential land offers the ideal blend of tranquility and convenience. Whether you're looking to settle down or invest in a promising area, this property has it all.

Surrounding Amenities
Nature and Recreation: Located near beautiful parks and playgrounds, this land ensures that nature and outdoor activities are just a stone's throw away. Enjoy leisurely strolls, weekend picnics, or invigorating runs in the lush green spaces that surround your new home.
Educational Institutions: Families will appreciate the proximity to a range of reputable schools, making the daily school run a breeze. The nearby educational facilities include: Lighthouse Christian College, Botanic Ridge Primary School, Cranbourne Primary School, Casey Grammar School, St Peters College - Clyde North Campus, Marnebek School.

Prime Location: Situated in the heart of Junction Village, this land boasts a strategic position that balances peaceful residential living with easy access to essential amenities.
Community Feel: Become part of a welcoming community known for its friendly atmosphere and strong neighborhood ties.
Future Growth: Junction Village is a growing area, making this an excellent investment opportunity with potential for significant appreciation.

Don't Miss Out! This is a rare opportunity to secure a piece of land in a sought-after location. Whether you're planning to build your forever home or looking to invest in a promising area, 2 Allegro Walk, Junction Village, is the perfect choice. Act now and make this dream a reality! For more information or to arrange a viewing, please contact Sanjay Singh.