

20 Brabourne Street, Mickleham, Vic 3064

Residential Land For Sale

Wednesday, 19 June 2024



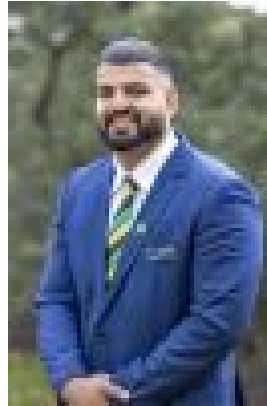
20 Brabourne Street, Mickleham, Vic 3064

Area: 448 m2

Type: Residential Land



Namneet Honey Walia
0397447967



Manjinder Manny Singh
0397447967

\$429,000 - \$449,000

Discover the perfect opportunity to build your dream home on this prime titled block of land located on Brabourne Street, Mickleham. Situated in a highly sought-after neighborhood, this generous parcel offers endless potential for a luxurious and modern lifestyle. Nestled in a rapidly growing community, this block is within close proximity to future schools, parks, and shopping centers, ensuring all your family's needs are met. Enjoy seamless connectivity with easy access to Mickleham Road and the Hume Freeway, making commuting to the city or surrounding suburbs a breeze. Surrounded by green spaces and recreational facilities, this location is perfect for families looking for a tranquil yet convenient lifestyle. With the title already issued, you can start planning and building your new home immediately without any delays. Located in a booming area with ongoing development, this block is a smart investment with promising capital growth potential. Don't miss out on this incredible opportunity to secure your piece of land in the thriving Mickleham community. Contact us today to learn more and take the first step towards building your future in this vibrant neighborhood. To secure this desirable piece of land, contact Manny from Team Honey at 0439 694 939. Don't miss out on this fantastic opportunity! Please see the below link for an up-to-date copy of the Due Diligence Check: <http://www.consumer.vic.gov.au/duediligence> DISCLAIMER: All stated dimensions are approximate only. Particulars given are for general information only and do not constitute any representation on the part of the vendor or agent