

22 Coogee Grove, Portarlington, Vic 3223

Residential Land For Sale

Wednesday, 19 June 2024



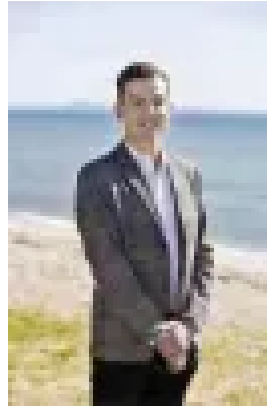
22 Coogee Grove, Portarlington, Vic 3223

Area: 420 m2

Type: Residential Land



Luke Campbell
0352571778



Bailey Grace
0352571778

\$585,000

Positioned just 2km (approx.) from the township of Portarlington, this impressive offering provides the perfect blank canvas for you to build your dream coastal home. Offering 14m frontage and 30m depth, this expansive allotment has ample space and takes full advantage of the stunning vistas on display across Port Phillip Bay to the You Yangs. Portarlington is known for its award-winning restaurants and wineries while maintaining seamless connectivity to Melbourne CBD via the Portarlington-Docklands ferry.