

32 April Crescent, Grantham Farm, Riverstone, NSW **RayWhite**

2765

Residential Land For Sale

Monday, 1 July 2024

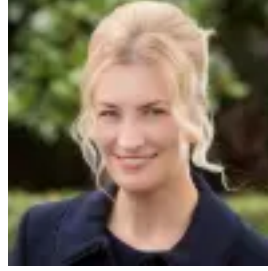
32 April Crescent, Grantham Farm, Riverstone, NSW 2765

Area: 487 m2

Type: Residential Land



Rod Nolan
0296271011



Theresa Scholtz
0296271011

Motivated Vendor - Must Be Sold

Rod and Theresa from Ray White Nolan & Iken are pleased to present: An exciting development opportunity presents itself here with this awesome building block. Registered and ready to build your dream home, investment or duplex (STCA). Located in the new Rosebank Estate in Grantham Farm surrounded by other quality homes and situated on top of the crest which means more sunlight and better views with privacy. The block is also within close proximity to the new Carmel Village Shopping Centre, Riverstone Town Centre, train stations and a great selection of schools. Other features include: South East facing; 18.335m frontage x 26.56m depth; Gentle slope to the rear; No restriction on your choice of builder or designs or timeframe (STCA). School Catchment: Riverstone Public School; Riverstone High School. Easy access to Windsor Road, Richmond Road and M2/M7; Riverstone Station; Tallawong Station; Rouse Hill Town Centre and Station. Contact the agents: Rod Nolan at 0416 120 224, Theresa Scholtz at 0450 522 811. Disclaimer: All information contained herein is gathered from sources we believe to be reliable. However, we cannot guarantee its accuracy. We do not accept any responsibility for its accuracy, and do no more than pass it on. Any interested persons should rely on their own enquiries.