

39 Linlithgow Way, Greenvale, Vic 3059



Residential Land For Sale

Saturday, 29 June 2024

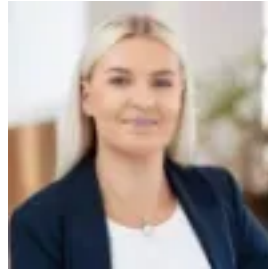
39 Linlithgow Way, Greenvale, Vic 3059

Area: 1407 m2

Type: Residential Land



Richard Ali
0393002344



Brittany HazelwoodSmith
0414134595

PRIVATE SALE | \$900,000

In Greenvale's newest prestige pocket, this incredible opportunity now presents itself to the astute builder or developer to snap up 1407m² (approx) of parkland-adjacent vacant land, with approved plans and permits for 3 magnificent detached dwellings. Showcasing three quality homes with four bedrooms, study, downstairs master suites and beautifully appointed kitchens, the homes are architecturally designed to take in the breathtaking views of the beautiful rolling landscape of the Yuroke Creek Reserve and its beautiful walking trails. There's an array of public and private education options including Aitken College, Greenvale Secondary College, St Carlo Borromeo Primary and Greenvale Primary all within a short drive, along with shopping, medical centres and local bus services, plus easy access to major arterials and Melbourne airport. Consider your options to build and settle in this beautiful locale with the added investment of two prestige properties to lease or sell. Contact us today for more information or to view the plans.