

51 Sloop Street, Tarneit, Vic 3029



Residential Land For Sale

Tuesday, 2 July 2024

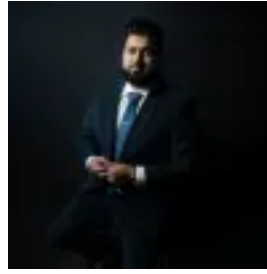
51 Sloop Street, Tarneit, Vic 3029

Area: 353 m2

Type: Residential Land



Mohinder Sohal
0435077073



Mohit Batra
0391909991

\$370,000 - \$399,000

Unique & Co. Real Estate group brings incredible opportunity to build your dream home on a 350 sqm block of land in the prestigious Alamora Estate, Tarneit. This prime parcel offers the freedom to design and create a home that perfectly reflects your vision and aspirations. Situated in the sought-after suburb of Tarneit, Alamora is just 30km from Melbourne's bustling city centre and 45km from the scenic coastal regions of Geelong and the Bellarine Peninsula. Closer to home, you'll find the historic town of Werribee, less than 10km away, known for its open range zoo, shopping plaza, and the grand Werribee Mansion and Rose Garden. Alamora is conveniently located near existing supermarkets, a medical centre, and various retail services.

Land Attributes
Area: 350 Sqm
Orientation: North
Front: 12.50m
Depth: 28m

Key highlights include:
1 km away from Karwan Primary School
3 km away from The Grange P-12 College
8 min walk to Brinbeal Secondary College
2 min walk to the park
4 min drive to Davis Creek Primary School and ICOM
7 min drive to Good News Lutheran College
9 min drive to Tarneit Garden Shopping Centre
10 min drive to Pacific Werribee shopping centre
12 min drive to Tarneit Central shopping centre

Additionally, multiple rail links and other transport options are already in place to ensure easy commuting. This extraordinary opportunity won't last long. If you're ready to embark on an amazing journey and embrace an active and healthy lifestyle in the Alamora Estate, contact Mohinder at 0413 114 454 or Mohit at 0483 000 009. Don't miss out! For your convenience, please find the link below to access an up-to-date copy of the Due Diligence Check List: <http://www.consumer.vic.gov.au/duediligencechecklist>

DISCLAIMER: While we strive to provide accurate information, all stated dimensions are approximate.