

# 70 Wahine Drive, Russell Island, Qld 4184

## Residential Land For Sale

Saturday, 9 March 2024



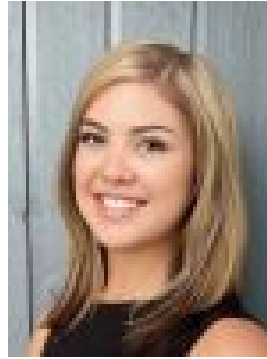
70 Wahine Drive, Russell Island, Qld 4184

Area: 594 m2

Type: Residential Land







Simon Gordon  
0448884625



Dani Verdouw  
0734092288

**\$189,000**

Imagine waking up every morning to breathtaking views stretching across to Stradbroke and down the majestic Canaipa Passage. Dream no more! We present to you an unparalleled opportunity to own a slice of paradise where the allure of the ocean meets the tranquility of elevated living. On a generous size block of land at 594m<sup>2</sup> with 18.2m street frontage. Uninterrupted Views, Guaranteed Perched in a prime elevated position, your views are not just breathtaking; they are protected. Rest assured, you will never be built out. This means your mornings will forever be greeted by the gentle embrace of the sun rising over the horizon, casting its golden glow over the waters and into your home. The promise of privacy and an uninterrupted connection to nature's wonders is yours to keep. Embrace the Breezes and the Panoramas Designed for those who appreciate the finer aspects of coastal living, this property catches the wonderful sea breezes, offering natural cooling and a constant reminder of your idyllic surroundings. The elevated position not only ensures panoramic views but also a sense of being on top of the world - a serene escape from the everyday. A Canvas Awaiting Your Vision While the site requires clearing, it presents a blank canvas for you to bring your dream waterfront home to life. The potential is immense, and the effort minimal, to transform this into your bespoke sanctuary, tailored to your desires and lifestyle. A Rarity Not to Be Missed Opportunities to own a piece of such exclusive waterfront real estate are becoming increasingly rare. Blocks offering a combination of elevation, views, a mooring, and guaranteed privacy do not come by often. Don't let this chance slip through your fingers. Secure your own piece of paradise and start living the waterfront dream you've always envisioned. Be quick - a lifestyle this desirable won't wait for long.  We Offer More: • Local Expertise: Benefit from our in-depth knowledge of the island's hidden gems. • Personalized Service: Experience a warm welcome with jetty pickups, a complimentary island map, and an immersive island tour.  Contact Us Today: • Simon: 0448 884 625 • Office (Dani/Kim): 07 3409 2288 •  Website: [www.islandlife.net.au](http://www.islandlife.net.au) •  Email: [simon@islandlife.net.au](mailto:simon@islandlife.net.au) Disclaimer: While we have taken utmost care to provide accurate information, prospective purchasers are encouraged to conduct their own enquiries to verify the details contained in this document.