

Lot 410, 56 Fig Crescent, Edgeworth, NSW 2285

RIBA
REAL ESTATE

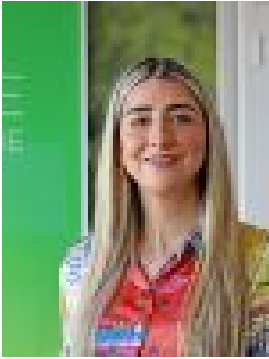
Residential Land For Sale

Monday, 1 July 2024

Lot 410, 56 Fig Crescent, Edgeworth, NSW 2285

Area: 456 m2

Type: Residential Land



Cameron Grove Sales
0436910290

\$380,000

Lot 410 is one of a kind, amazing views of the Estate, ideal for split level or two storey home. This lot has a 15 m frontage and now registered and ready to build! Start your building journey now! Surrounded by quality homes in the area and a short distance to the shopping plaza. This lot is ideal for two storey or split-level design homes. Cameron Grove Estate is a true hidden gem; a vibrant, family-friendly community located within easy reach of shops, delicious dining options, cafés, parks and playgrounds. The Estate maintains the perfect balance of being quiet while providing connectivity to major arterial roads leading in all directions. Designed with a focus on convenience and connection, Cameron Grove Estate's exceptional land and homes are a rare opportunity to secure a dream property, in an up and coming area. We are open Saturday and Sunday, reach out on 0436 910 290 to book your tour on site! 28 Breakwell Road, Cameron Park