

Lot 49 Paradise Close, Palm Cove, Qld 4879

Residential Land For Sale

Wednesday, 10 July 2024



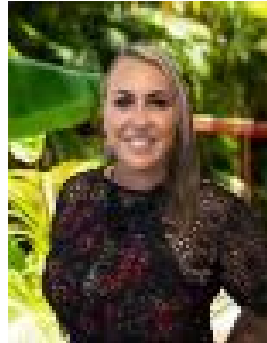
Lot 49 Paradise Close, Palm Cove, Qld 4879

Area: 570 m2

Type: Residential Land



Matthew Pearce
0418708758



Nicole Barry
0418763311

\$435,000

Lot 49 | Paradise Point Estate | No Body Corporate fees or Specific Style Building Covenants apply. Build your dream home in this stunning new estate, only moments away from Palm Cove esplanade. Due to be titled and ready to build by end of 2024. Call Matthew Pearce or Nicole Barry for more information.