

Lot 7, 9 Glengarrie Road, Marsden Park, NSW 2765



Residential Land For Sale

Wednesday, 21 August 2024

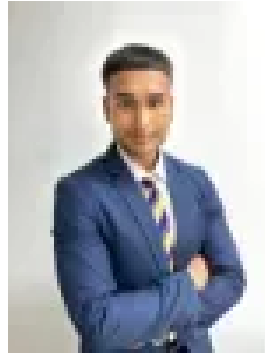
Lot 7, 9 Glengarrie Road, Marsden Park, NSW 2765

Area: 250 m2

Type: Residential Land



Pardeep Smotra



Sardul Humagain

Contact Agent!

Pardeep from Sapphire Estate Agents presenting this Amazing Land Only Opportunity in Marsden Park! Land Size Starting from 250 - 400 SQM || Tentative Registration - October / November. One of the only Land Only Opportunities in the HIGHLY sought after suburb of Marsden Park. Build your dream home with your choice of Builder. This soon to be registered land is a canvas ready for your vision. Join the community in this highly desirable area and be part of its growth story. Embrace the future at Marsden Park where convenience, community, and potential converge.

Shopping Centers • Elara Village Centre: Supermarket, retail stores, and cafes (approx. 2 km away). Schools • Upcoming Melonba Public School: Primary school (approx. 3 km away). • Upcoming Melonba High School: Secondary school (approx. 3 km away). Nearby Parks and Gyms • Bandon Grove Park: Playground and sports fields (approx. 1.5 km away). • 3 Gyms within a 5 Minute Driving Distance. Marsden Park Medical Centre: • Local healthcare services (approx. 2 km away). • Blacktown Hospital: Major hospital with comprehensive services (approx. 10-12 km away). Marsden Park Business Hub: • Bunnings Warehouse, Officeworks, Costco, Kmart, and The Good Guys (approx. 2-3 km away).

Pardeep Smotra : 0421226291 Sardul Humagain : 0452600785

Disclaimer: We believe that the information contained herein is gathered from sources we deem to be reliable. However, all interested parties should make and rely upon their own inquiries in order to determine whether or not this information is, in fact, accurate