

Lot 714, Willandra Way, Edgeworth, NSW 2285

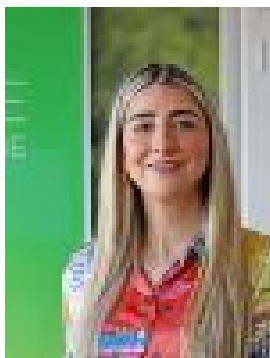
Residential Land For Sale

Wednesday, 3 July 2024

Lot 714, Willandra Way, Edgeworth, NSW 2285

Area: 650 m2

Type: Residential Land



Cameron Grove Sales
0436910290

\$560,000

Unlock the potential of this exceptional 650m² dual occupancy site in the sought-after Cameron Grove Estate. Perfectly positioned for families and investors alike, this block offers an unparalleled opportunity to build and prosper in a vibrant, growing suburb. Don't miss out on this rare chance to secure a premium duplex site (STCA) in the Estate. Whether you're an investor looking to maximise returns or a family seeking to create a multi-generational living space, this block of land is the perfect canvas.

Key Features:- A large landholding registered and ready to build - Level/flat block - Breathtaking bushland views- Conveniently placed in the heart of popular Cameron Grove Estate- Take your lifestyle to the next level by building a home that suits your needs- On the doorstep of major arterial roads – ideal for commuters and travellers- Well-regarded schools, sporting fields, and shopping centres nearby- An unbeatable project for builders/developers keen for a quick turn-around time

An ideal location to raise a family, Cameron Grove Estate offers not only luxurious modern homes but access to an easy, well-connected lifestyle. Within just a ten-minute drive, residents are connected to no less than 12 schools, including Edgeworth Heights and West Wallsend High School. School-age kids also enjoy an abundance of play areas nearby, including playgrounds, outdoor gyms, nature reserves and picnic areas, sport fields and running tracks, netball courts and even a skate park. For parents, a shopping centre, cafés, Harrigan's Irish Pub newly opened in Cameron Park. Woolworths has already opened for business; The area continues to grow, with established shops you'll have the pleasure of experiencing lovely restaurants, shops, medical centres and other amenities. Cameron Grove Estate is a well thought out, family-orientated development located close to schools, the University of Newcastle, parks and recreational facilities. Just moments from the M1 and Hunter Expressway. – Cameron Grove has it all!

We are welcoming you Thursday - Monday, via appointment at 28 Breakwell Road, Cameron Park NSW 2285 you can get in contact with us 02 4955 4820.