

Lot 786, Wellington Avenue, Lakelands, WA 6180



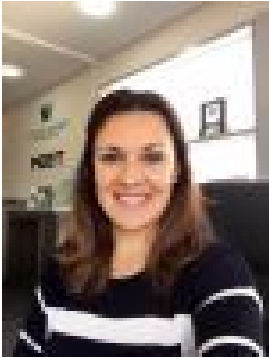
Sold Residential Land

Monday, 15 July 2024

Lot 786, Wellington Avenue, Lakelands, WA 6180

Area: 375 m2

Type: Residential Land



Raelyn Smith
0459955519

Contact agent

There is more to life at Lakelands. Lakelands estate is situated in Perth's high-growth southern corridor just ten minutes north of Mandurah and fifty minutes south of the CBD. Offering everything you need for an enviable and rewarding way of life, this masterplanned community benefits from the thriving Lakelands suburb profile, with major transport, employment, retail, educational and recreational hubs all close by. By choosing to call Lakelands home, you'll wake up every day feeling nestled by nature. Picturesque parklands, two natural lakes and walking trails surround the estate, with pristine swimming beaches just moments away. For more information or to enquire about this perfectly located estate, please contact our friendly Sales Representative, Raelyn Smith. *Pricing is subject to change without notice.