

Sylvia Waters, Blaga Way, Nords Wharf, NSW 2281

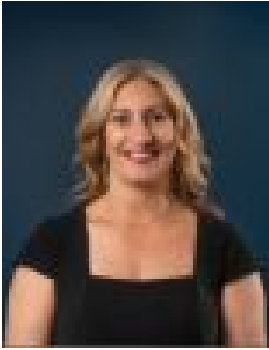


Residential Land For Sale

Wednesday, 12 June 2024

Sylvia Waters, Blaga Way, Nords Wharf, NSW 2281

Type: Residential Land



Victoria De Marchi
0402818080

Price from \$599,000

Sylvia Waters, Nord's Wharf is positioned in an idyllic lakeside address in one of Lake Macquarie's most sought-after lifestyle suburbs. Carefully planned by a team of leading consultants, Sylvia Waters incorporates 100 residential land lots, providing the perfect blank canvas to start planning your dream home. - Registered & ready to build - Final homes now selling - Land from 506m² to 782m² Located on the eastern side of pristine Lake Macquarie, Sylvia Waters is nestled amongst the Lake, ocean, and bush, making it the perfect lifestyle retreat close to Sydney, Newcastle, and the famous Hunter Valley. Whether you're enjoying Sylvia Waters from the comfort of your new home, paddling the clear blue waters of Nord's Wharf, lounging on the pristine sands of Catherine Hill Bay, or exploring the untouched bushland of Wallarah National Park, its breathtaking beauty and simplistic lifestyle will be unrivalled. Contact our sales consultant Victoria De Marchi today to own your piece of paradise.