

165 Sutherland Street, Paddington, NSW 2021

BresicWhitney

Terrace For Sale

Wednesday, 24 April 2024

165 Sutherland Street, Paddington, NSW 2021

Bedrooms: 2

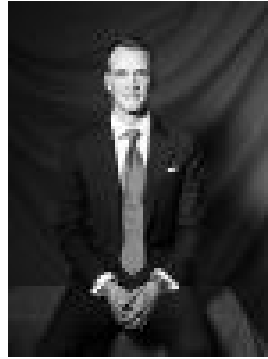
Bathrooms: 1

Area: 89 m2

Type: Terrace



Christopher Breedon
0455372089



Josh Fleming
0413175060

Guide \$1,850,000

Auction Location: On site Positioned at the Woollahra end of Paddington, this Victorian terrace is located just 500m to Queen Street village and an easy walk to Edgecliff train station, Trumper Park and Double Bay. Capturing sunshine, privacy and north-easterly breezes from its elevated setting on a dual-access block with rear access/potential to add parking from Hargrave Lane (STCA), this unpolished gem presents exciting scope for modern transformation in a sought-after position. Highlights* High-set, sun-drenched North facing house* Rear lane access/potential to add parking* Elevated from street, bright living/dining* Sleek kitchen w/ gas, s/steel apps, d/washer* Main bedroom w/ balcony & leafy outlook* Private entertainer's courtyard & garden* Washing machine, dryer & fridge included* Near Five-Ways, Woollahra Village, Dbl Bay* Leafy street lined w/quality character homes* Scope to redesign & add significant value