

4 Bingle Street, The Hill, NSW 2300



Terrace For Sale

Thursday, 11 July 2024

4 Bingle Street, The Hill, NSW 2300

Bedrooms: 5

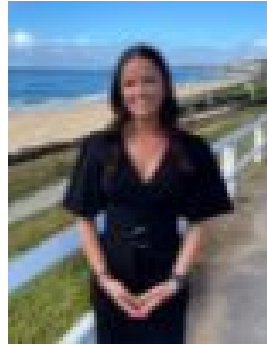
Bathrooms: 2

Area: 177 m2

Type: Terrace



Lyndall Allan
0439761123



Georgia Rickey
0423377800

Price Guide On Request

Forming part of a handsome row of classic Victorian terraces thought to be built around c1872 and designed by respected local architect, James Henderson, this home is enviably positioned directly opposite King Edward Park. The four-level gem, in the heart of The Hill, is bursting with potential, ready for a complete makeover to restore its timeless charm while transforming it into a contemporary haven for modern family life. Currently, the main level houses your living, dining, and kitchen spaces, while the upper level boasts three spacious bedrooms topped by a versatile two-room loft. There's plenty of room to reimagine the layout for today's lifestyle, making the most of the north-westerly city views at the back and the serene park views at the front. The lower ground floor presents an exciting opportunity to create self-contained accommodation with the simple addition of plumbing. And don't forget the backyard – it's a blank canvas for your dream inner-city garden. This prime location offers endless possibilities for everyone, from families to busy professionals. You're just steps away from an array of lifestyle attractions. Start your day with a surf at Newcastle Beach, enjoy a leisurely stroll through King Edward Park, or take in the breathtaking coastal views on the Bather's Way walk. Coffee shops on Darby and Hunter Street, cultural experiences at the regional Art Gallery and Library, and a refreshing dip in the Bogey Hole are all at your fingertips. - Four level Victorian terrace on 177.5sqm block opposite King Edward Park - Traditional lounge and dining rooms with twin fireplaces- Retro kitchen with gas stove- Bathroom/laundry on ground floor, main bathroom serves three bedrooms on first floor- Versatile two room loft retreat, bedroom on lower ground floor with separate access- Newcastle Grammar – 550m, Newcastle East Public School – 700m- Stroll to Newcastle Ocean Baths, the Bogey Hole, Newcastle Beach

Disclaimer: We have obtained this property information from sources we believe to be reliable; however, we cannot guarantee its accuracy. Prospective buyers are advised to carry out their own investigations.