

The Sullivan/355 Northbourne Ave, Lyneham ACT 2602, Lyneham, ACT 2602



Sold Apartment

Friday, 11 August 2023

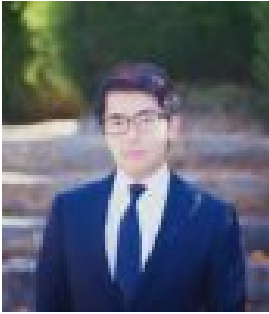
The Sullivan/355 Northbourne Ave, Lyneham ACT 2602, Lyneham, ACT 2602

Bedrooms: 1

Bathrooms: 1

Parkings: 1

Type: Apartment



Charlie Chen
0430298865



Jay Hong

Contact agent

Perfectly positioned less than 3km north of Canberra's CBD, The Sullivan at Northbourne Village delivers city life at its best. It has everything you need. Work-life balance is a given. With transport at your front door and expansive parklands behind, you don't have to choose between livelihood and lifestyle. The Sullivan is a key part of the plan to build on the heritage character of Lyneham, integrating city convenience and suburban amenity to redefine urban living. This stunning one bedroom apartment is perfect for live-in owners or investors alike! And its walking distance to the vibrant Dickson business/shopping precinct with access to top class restaurants, gyms, bars and shopping centres. With this house, you can truly embrace living in a city. Features: 5-minute drive to Australian National University 6-minute drive to Canberra Centre 6-minute drive to Dickson Walking distance to Lyneham shops Living area: 53m² Balcony: 8m²