

1/12 Chippendale Court, Templestowe, Vic 3106



Townhouse For Sale

Sunday, 23 June 2024

1/12 Chippendale Court, Templestowe, Vic 3106

Bedrooms: 4

Bathrooms: 3

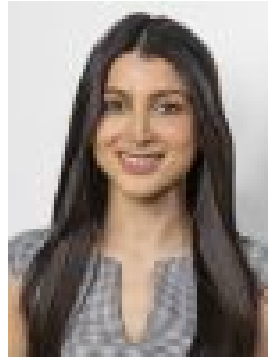
Parkings: 2

Area: 251 m2

Type: Townhouse



Mark Di Giulio
0407863179



Raha Hossain
0449054007

\$1.32m - \$1.452m

Part of a picturesque estate, positioned in a private and peaceful court, this beautiful modern home showcases modern space, high-end finishes and all the hallmarks of contemporary design. Step inside to parquet style hardwood flooring, plus an expansive open plan living, dining and stunning kitchen precinct that not only provides a place to relax or entertain, but enjoys an abundance of natural light. Incorporating waterfall finished stone benches, integrated appliances, a feature Island bench and breakfast bar, a plumber fridge space and plenty of soft-close storage, the kitchen is a real highlight. A hotel-style guest bedroom with walk-in robe and exquisite en-suite, as well as a powder room and separate laundry provide added convenience on this level before you head upstairs to additional bedroom accommodation. Here, three bedrooms with robes are highlighted by a five-star master with walk-in robe and en-suite with walk-in shower and floor-to-ceiling tiles, while all are separated by a versatile retreat, a matching modern main bathroom and a large sun-drenched balcony. Outside a covered alfresco entertaining deck with a cooling ceiling fan is the perfect place to admire the impressive low-maintenance gardens that connect cleverly to a garden shed and double garage. Centrally controlled heating and cooling are bonuses in a complete property package located in the Serpell Primary School and Doncaster Secondary College school zones, within walking distance to Ruffey Lake Park, close to The Pines Shopping Centre and Westfield Doncaster Shoppingtown, with easy access to Williamsons Rd, Manningham Rd, Doncaster Rd, Tram Rd, Elgar Rd and the Melbourne CBD via the Eastern Freeway.