

1/33 Shakespeare Grove, Heidelberg Heights, Vic 3081

Nelson Alexander

Townhouse For Sale

Wednesday, 10 July 2024

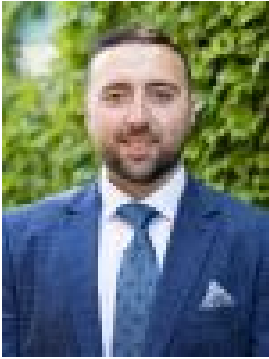
1/33 Shakespeare Grove, Heidelberg Heights, Vic 3081

Bedrooms: 4

Bathrooms: 3

Parkings: 2

Type: Townhouse



Ivan Sulfaro
0394902900

EOI \$950,000 - \$1,000,000

Executive comfort in an idyllic location Presented like new in a peaceful pocket, this stylish modern home is the perfect blend of contemporary comfort and suburban bliss. Enjoy a spacious feature-rich layout primed for today's busy family, all quietly nestled amongst leading schools, serene parkland and convenient transport to the city. Full corner windows allow natural light to fill your generous open plan living and dining zones, each flowing freely to the immaculate kitchen where stone benchtops, stainless steel appliances and a wide breakfast bench invite easy entertaining. The formal study doubles as a guest bedroom if needed, served by a stunning fully tiled bathroom with separate laundry via the kitchen. Luxuriate in the huge main bedroom upstairs with his-and-hers walk-in robes and sparkling ensuite. Two further large bedrooms offer built-in robes, each sharing the stylish central bathroom complete with both bathtub and shower. Dine alfresco in the privacy of the rear patio or relax in the beautifully kept front garden. The garage offers drive-through access with a storage shed at the rear, while further highlights include a water tank, under stairs storage space, and ducted heating and cooling throughout the home. Join this serene central pocket within a stroll of Shelley Park, bus stops and local shops on Waterdale Road, with just minutes to Rosanna Village for further shops, friendly cafés and city trains via Rosanna Station. Also within moments are esteemed public and private schooling, La Trobe University, Northland Shopping Centre, Austin/Mercy Hospital, lively Burgundy Street shopping and dining, Yarra River trails and golfing, and easy freeway access including the upcoming North East Link.