

1/47 Gladstone Road, Sadliers Crossing, Qld 4305



Sold Townhouse

Tuesday, 2 July 2024

1/47 Gladstone Road, Sadliers Crossing, Qld 4305

Bedrooms: 3

Bathrooms: 2

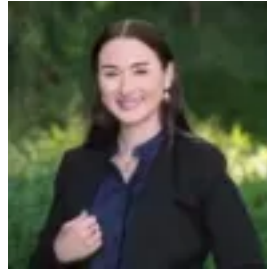
Parkings: 1

Area: 141 m2

Type: Townhouse



Douglas May
0410488110



Shakimra Gordon
0459453380

\$480,000

HIDDEN TREE-LINED SANCTUARY A secret hideaway nestled by the birds, breezes, and trees, this beautiful townhouse enjoys a blissful position amongst nature in a quiet complex. The ideal home or investment, this peaceful refuge offers the utmost privacy and a bright, open layout, inviting leafy outlooks and a relaxing ambience into every room. The indoor/outdoor design moves across the air-conditioned living and dining area to the front verandah, rear deck, and alfresco courtyard, where you can unwind, entertain, and share meals against the tranquil tree-lined backdrop. The spacious kitchen, with its ample storage, stone benchtops, and stainless steel appliances, caters perfectly to everyday meals and dining with friends. Three bedrooms upstairs bask in the bushland views and include a master suite with a mirrored built-in robe, ensuite, and air-conditioning. A second bathroom finalises the upper floor, and a powder room, laundry, and garage are below. **Property highlights:-** Private townhouse in a quiet and leafy complex- Open living and dining area with air-conditioning and scenic views- Spacious stonetop kitchen featuring stainless steel appliances- Front and rear decks and alfresco courtyard for outdoor entertaining- 3 bedrooms with BIRs, 2.5 bathrooms, concealed laundry, remote garage- Master suite includes air-conditioning and a private ensuite. Situated in a lovely tree-lined setting, parks and playgrounds are within easy walking distance, and you can hit the fairways at Ipswich Golf Course. Providing excellent access to transport, Thomas Street station and bus stops are only 900m away, and you are just 2.5km from the shopping, dining, galleries and cinemas in Ipswich CBD. Ipswich Hospital is only 2.4km from your door, and families are less than 2km to Blair State School, Ipswich Grammar and St Edmund's College. **DISCLAIMER:** Whilst all care has been taken to ensure that the information provided herein is correct, we do not take responsibility for any inaccuracies. Accordingly, we recommend that all interested parties should make their own enquiries and due diligence to verify the information. Any personal information provided to Cameron Crouch Property T/As Ray White Sherwood, will come under the terms set out in our Privacy Policy, which can be found here for your convenience: <https://www.raywhite.com/privacy>.