

**10 Daphne Walk, Clyde, Vic 3978**



**Townhouse For Sale**

Tuesday, 25 June 2024

10 Daphne Walk, Clyde, Vic 3978

**Bedrooms: 3**

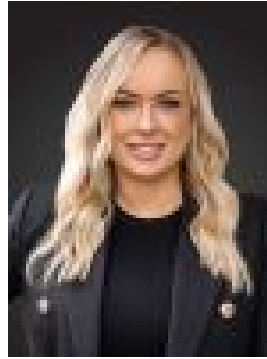
**Bathrooms: 2**

**Parkings: 2**

**Type: Townhouse**



Tahnee Morgan  
0410029953



Terri Fellows  
0400573483

## **\$500,000 - \$550,000**

Situated in the near new estate of Parkview in Clyde, this stunning two years young townhouse offers an unparalleled blend of style, functionality, and comfort, making this an ideal opportunity for first home buyers and savvy investors looking to capitalise on a great investment. Driving up to this home you will be impressed by the modern façade, low maintenance yard and the park frontage view. On entry you are welcomed into an open plan living, kitchen and meals zone that's bathed in natural light and highlights a beautifully presented kitchen, equipped with a stainless-steel dishwasher, gas cooktop, 20mm Caesar stone benchtop, breakfast bar and ample cabinetry including overhead storage. Adjoining this space offers you a dedicated laundry and powder room. Leading up the stairs you are greeted by a secondary living zone that's surrounded by the luxurious master bedroom boasting a large walk-in robe, ensuite with double vanity, shower, and toilet as well as the added bonus of a large balcony, adding that touch of elegance. The modern bathroom features a shower, bathtub, vanity, and separate toilet, that's all conveniently situated around the remaining two bedrooms with sliding build-in robes. Some great inclusions are high ceilings, reverse cycle split system's upstairs and downstairs for year-round comfort, illuminated LED lighting, under-stair storage, double remote-controlled garage with internal access. A uniquely planned community in a terrific estate will cater to your every need! Shopping on Clyde is a 6-minute drive, just a hop skip and a jump to Clyde Primary School, close to Lighthouse Christian College and St Peters College, a reliable bus and proposed future train network are all within walking distance, making travelling to and from the estate a breeze. With its impeccable design, convenient features, prime location, and no body corporate, this townhouse is simply irresistible. Please contact Terri 0400 573 483 | Tahnee 0410 029 953 for more information, or we look forward to seeing you at our next open for inspection. Property Code: 557